

Appendix A - Measurements of FEMA Flood Plain Crossings by the Project

This appendix contains maps of all the FEMA Flood Plain crossings of the project, as labeled in the table “PennEast Flood Plain Crossings within the DRB” in the main comment document.

On each page we show crossing of the FEMA floodplain by the pipeline in a single location with two measurement maps. The first map shows linear feet crossed by the pipeline, the second shows acreage of trees that would be cut if the pipeline is built.

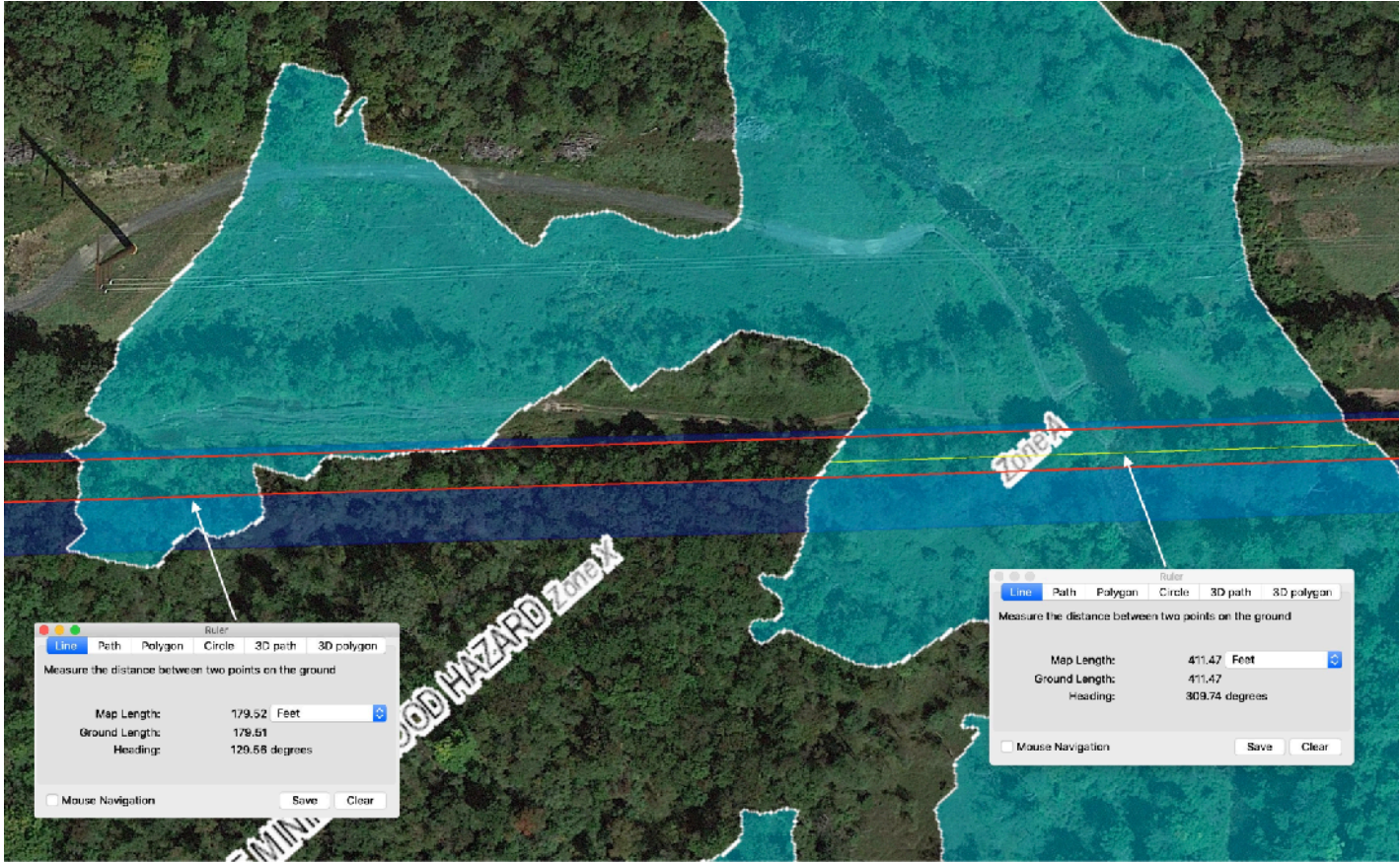
For each map, the pipeline permanent ROW is marked in red, the temporary construction ROW is marked in dark blue, and the FEMA flood zones are marked in light blue with a white outline. HDD and boring stretches will have no dark blue ROW marked for them.

Measurement lines are in yellow. In areas of complex mixes of tree cover and bare areas, multiple measurements were made to only capture the treed areas for acreage of tree cutting.

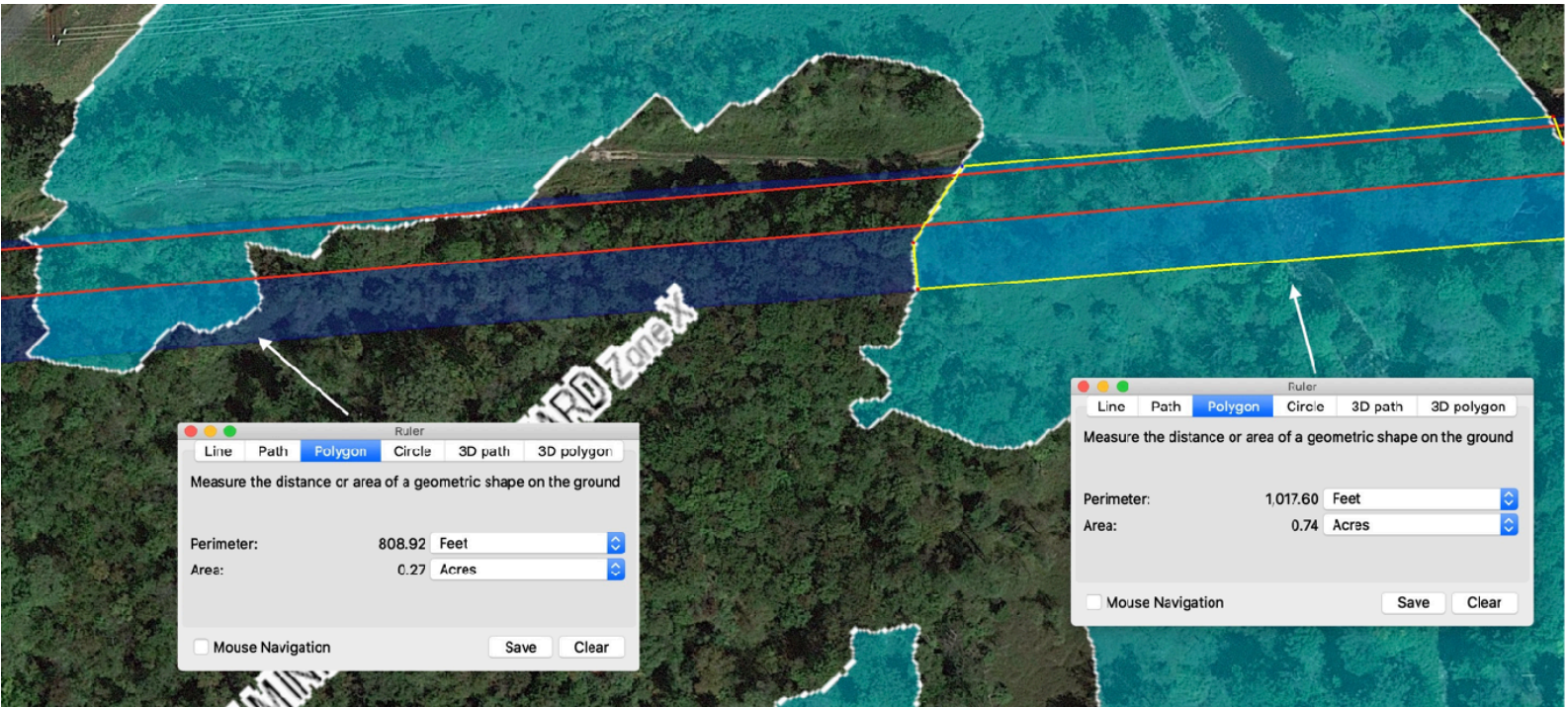
Note that it is possible that some of the Google Earth imagery is out of date. However, in general terms Google imagery is typically only a few years old. In addition, given that the vast majority of the project is sited through Wooded and Agricultural land, the likelihood of large changes in tree cover is very slight.

Mile Marker 16.1

Linear Feet



Acres of Tress Cut

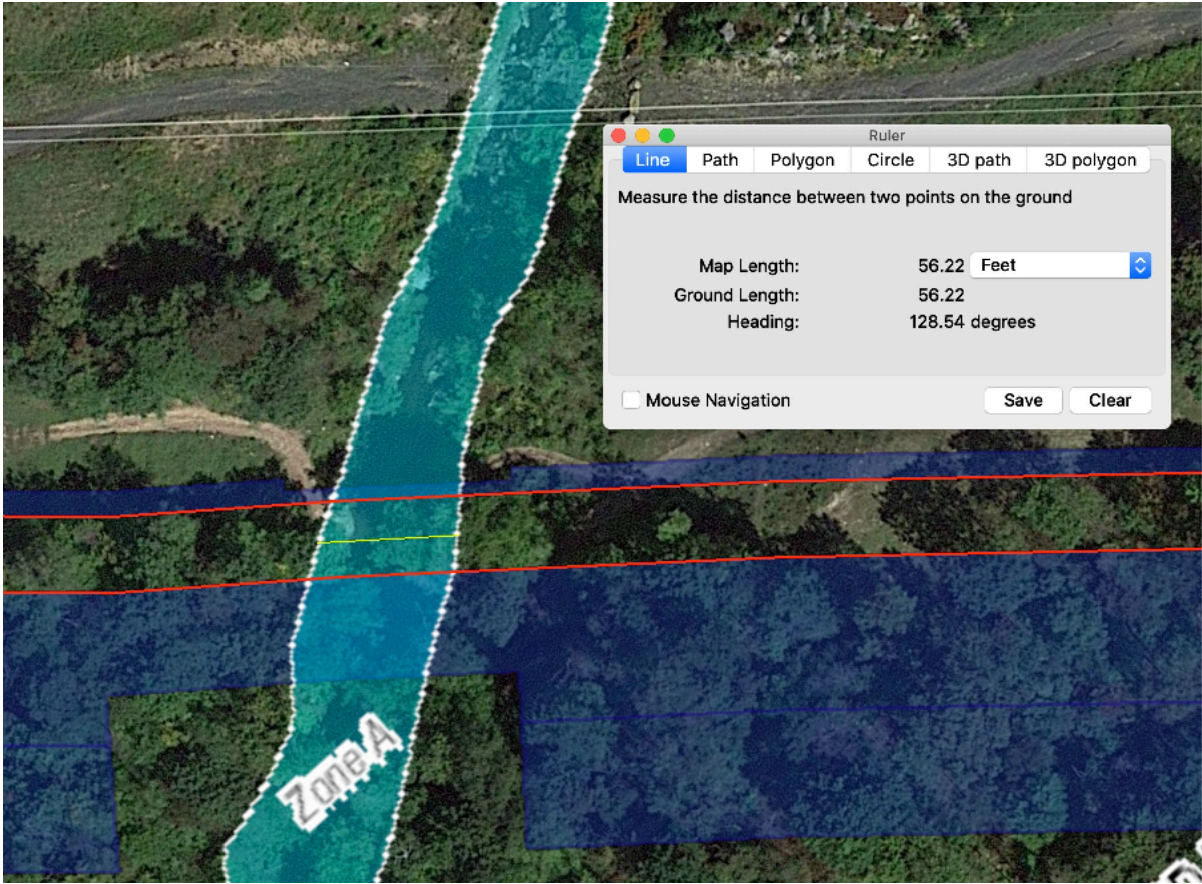


Key

Pipeline ROW	<div></div>
Measurement	<div></div>
Temp. ROW	<div></div>
Flood Plain	<div></div>

Mile Marker 16.7

Linear Feet



Acres of Tress Cut

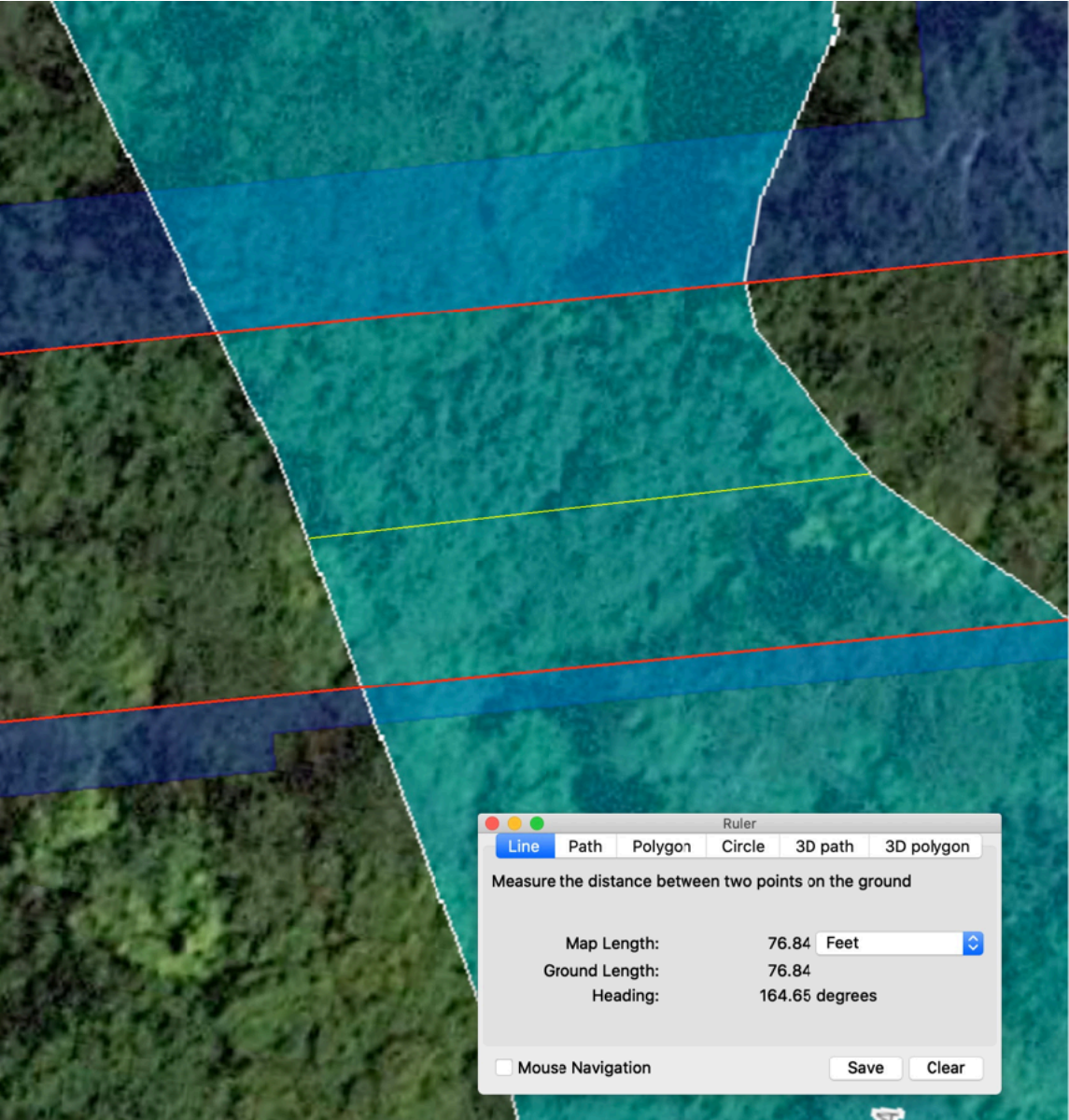


Key

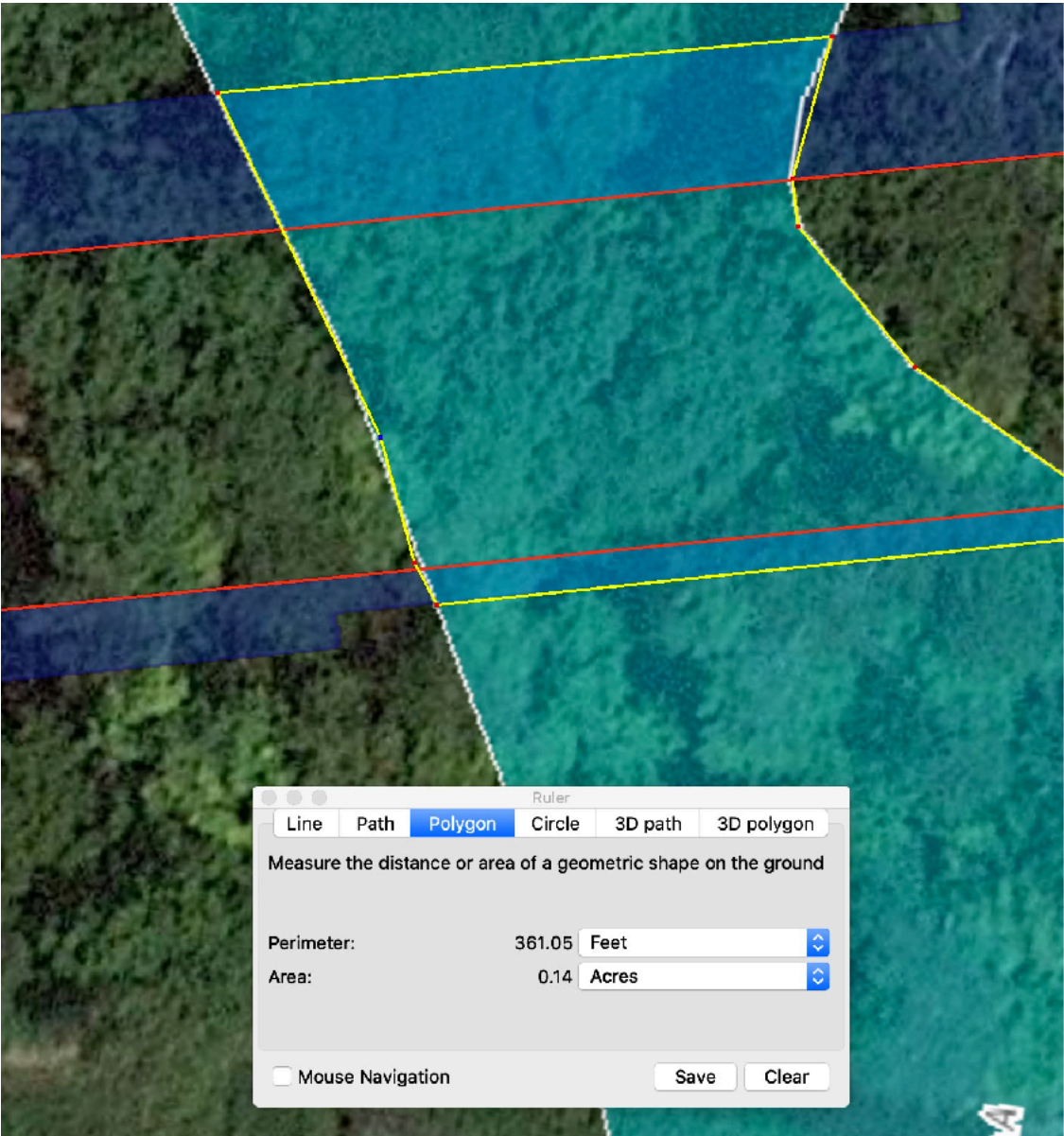
Pipeline ROW	<div></div>
Measurement	<div></div>
Temp. ROW	<div></div>
Flood Plain	<div></div>

Mile Marker 19.7

Linear Feet



Acres of Tress Cut

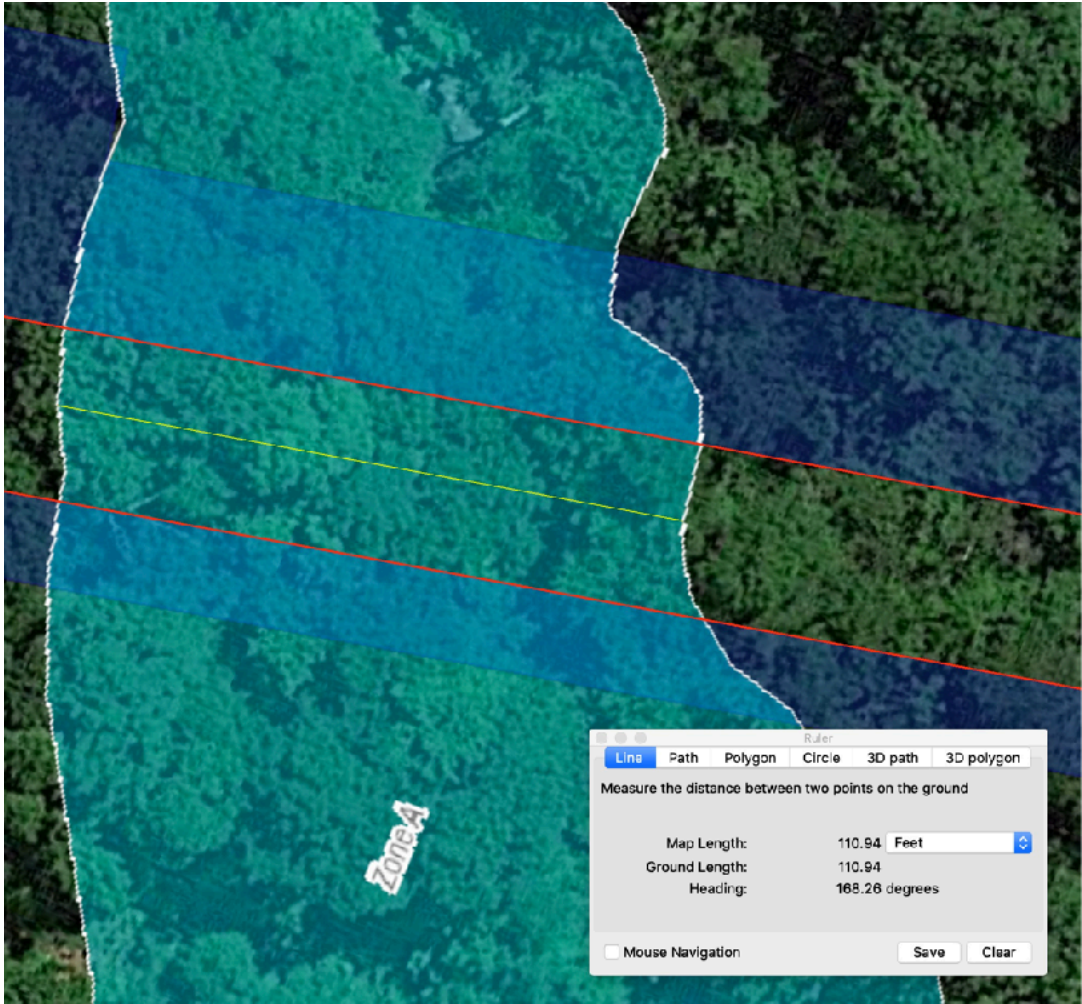


Key

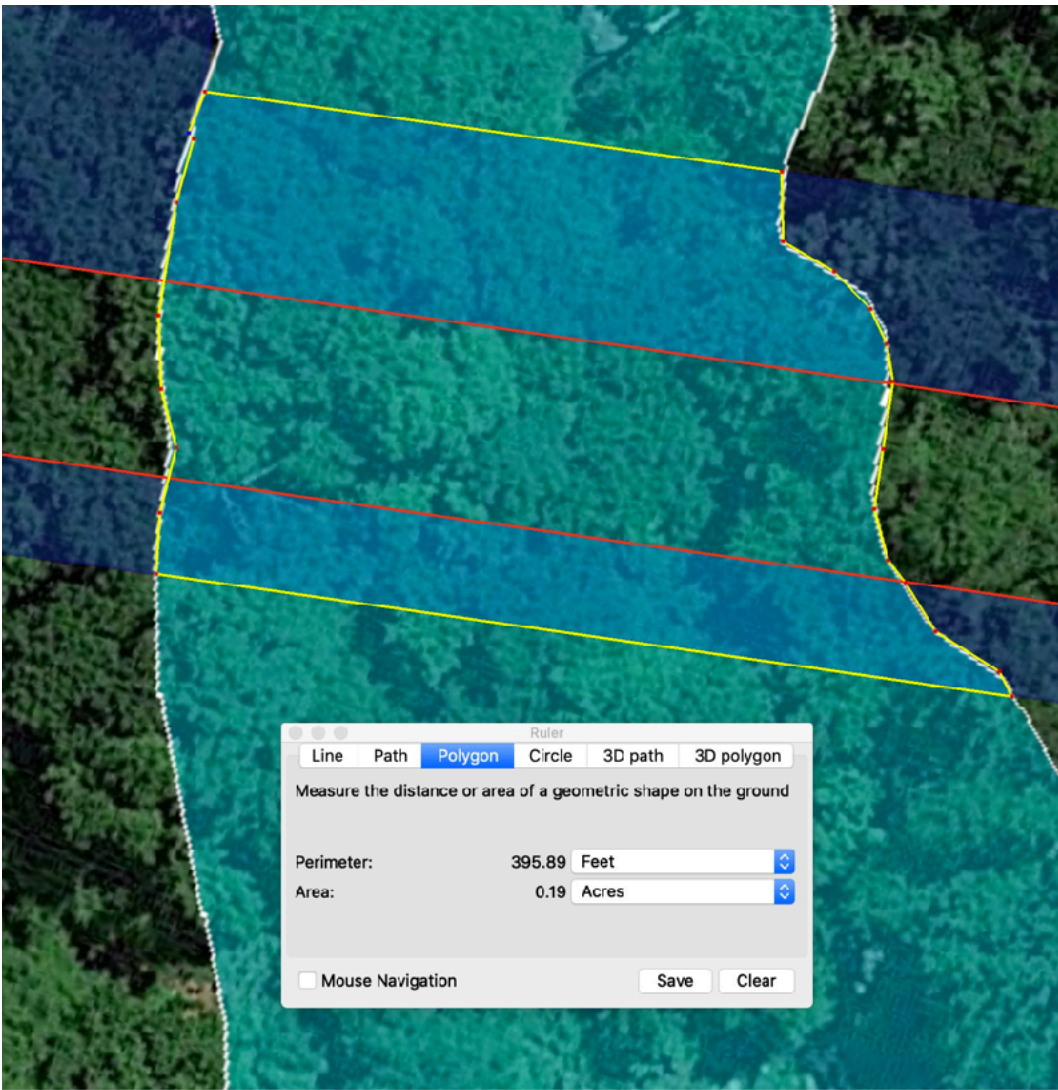
Pipeline ROW	<div></div>
Measurement	<div></div>
Temp. ROW	<div></div>
Flood Plain	<div></div>

Mile Marker 22.6

Linear Feet



Acres of Tress Cut

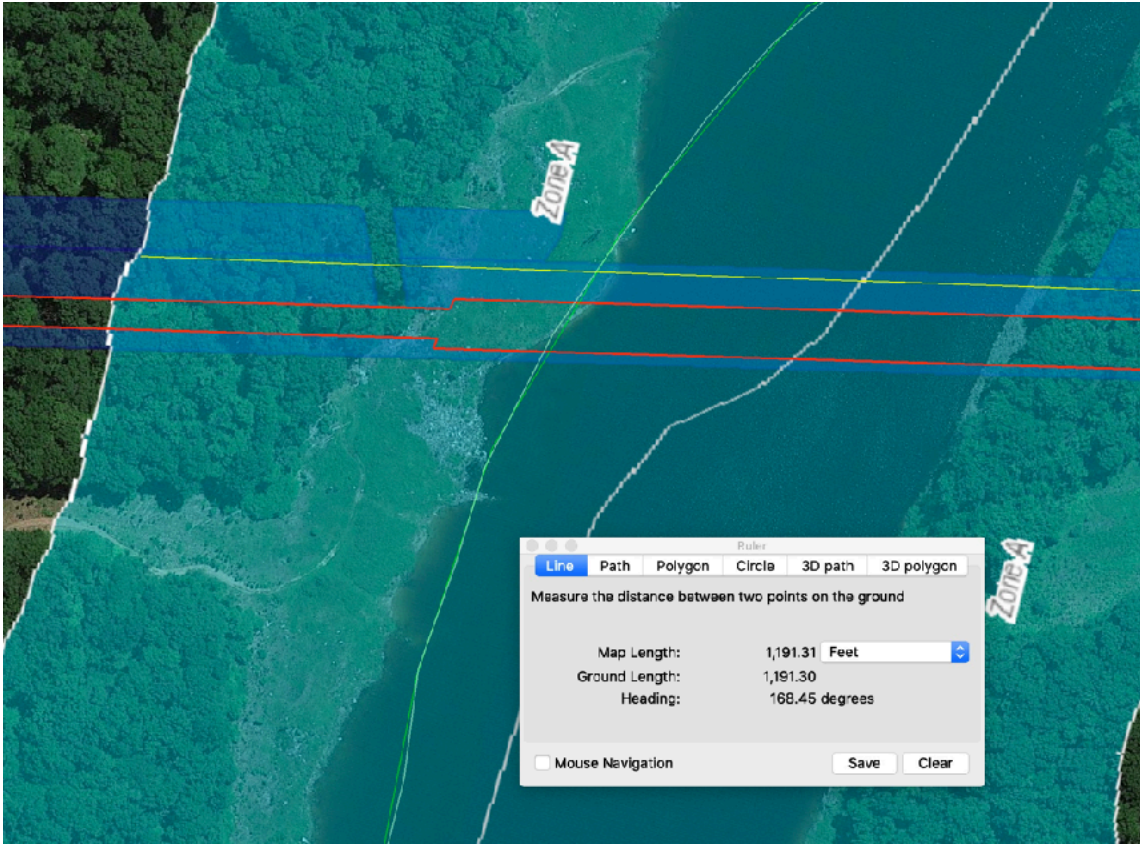


Key

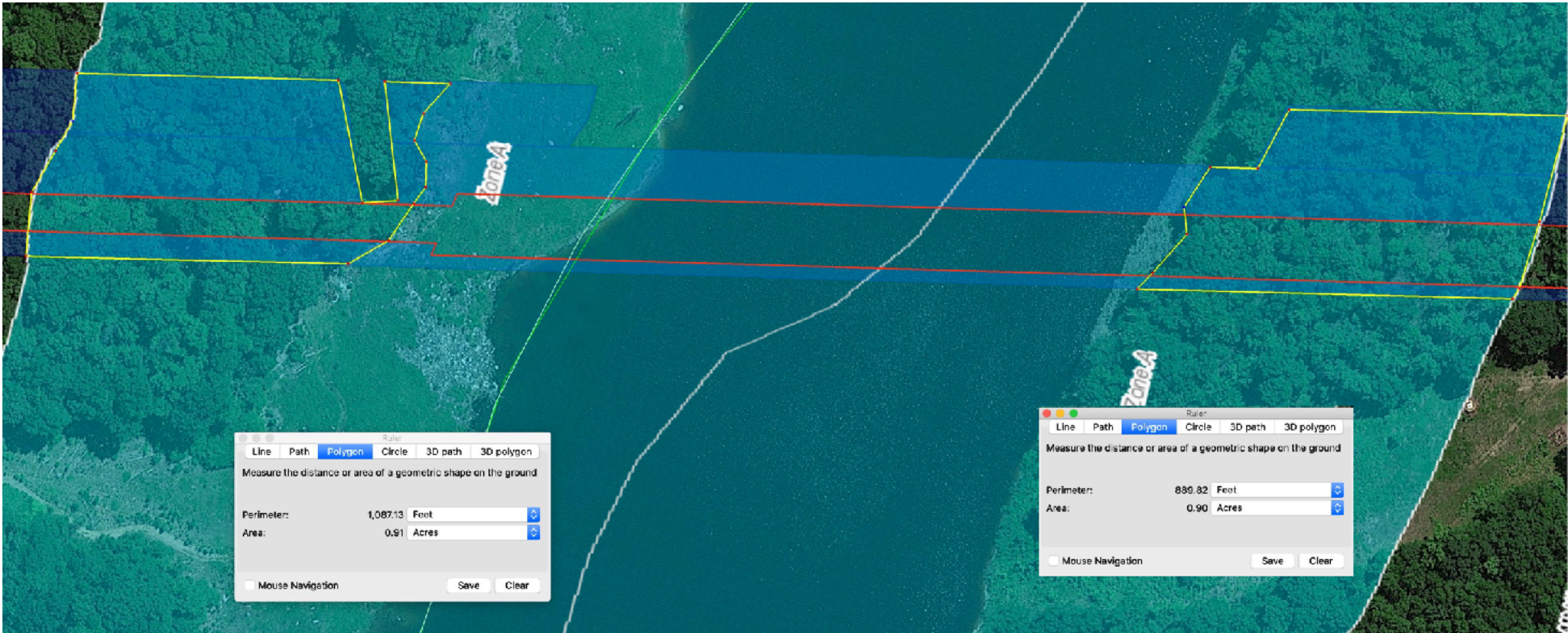
- Pipeline ROW
- Measurement
- Temp. ROW
- Flood Plain

Mile Marker 23 (Lehigh River)

Linear Feet



Acres of Tress Cut

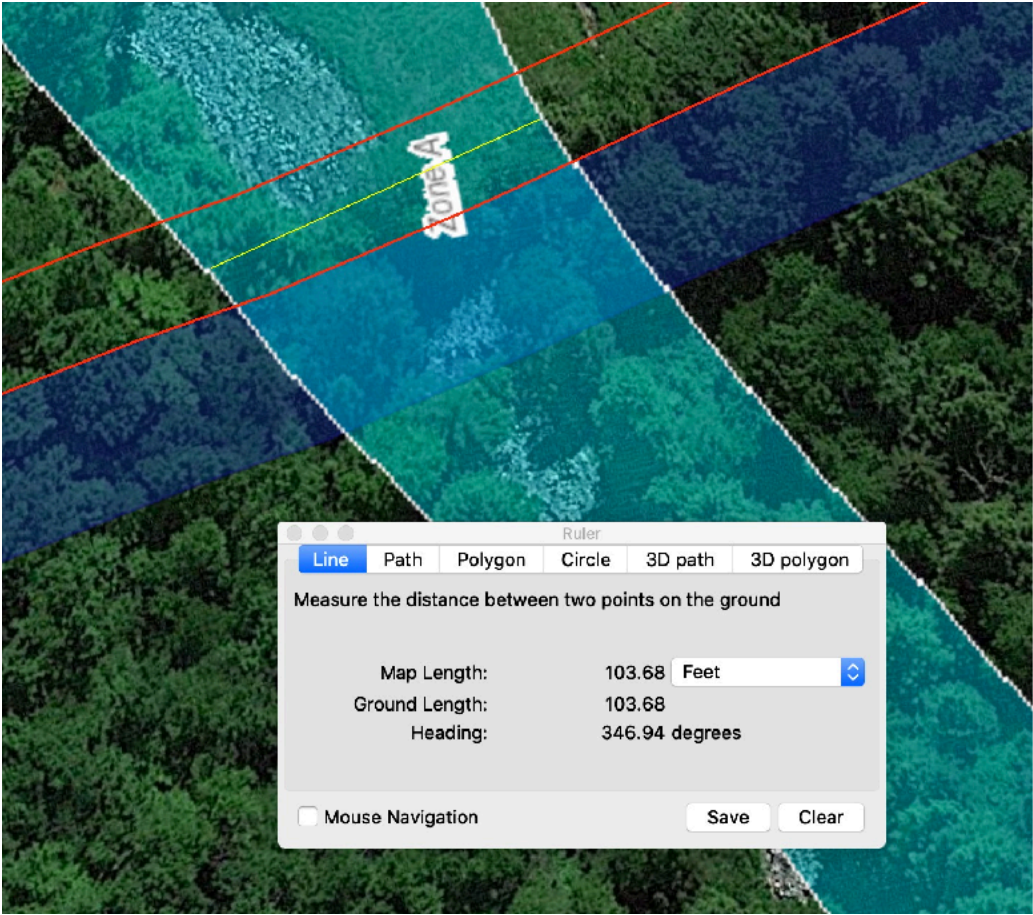


Key

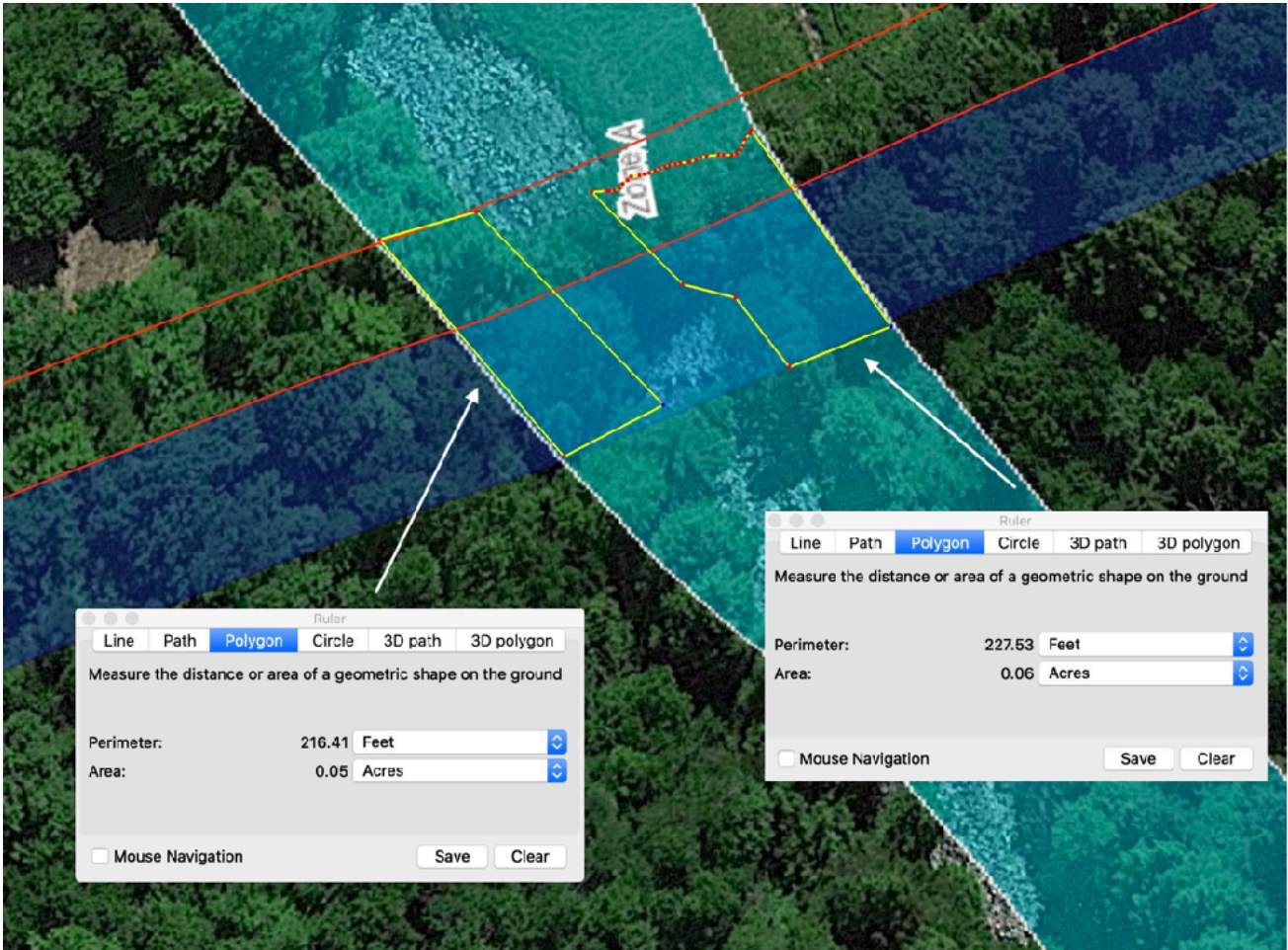
- Pipeline ROW
- Measurement
- Temp. ROW
- Flood Plain

Mile Marker 33.2R3

Linear Feet



Acres of Tress Cut

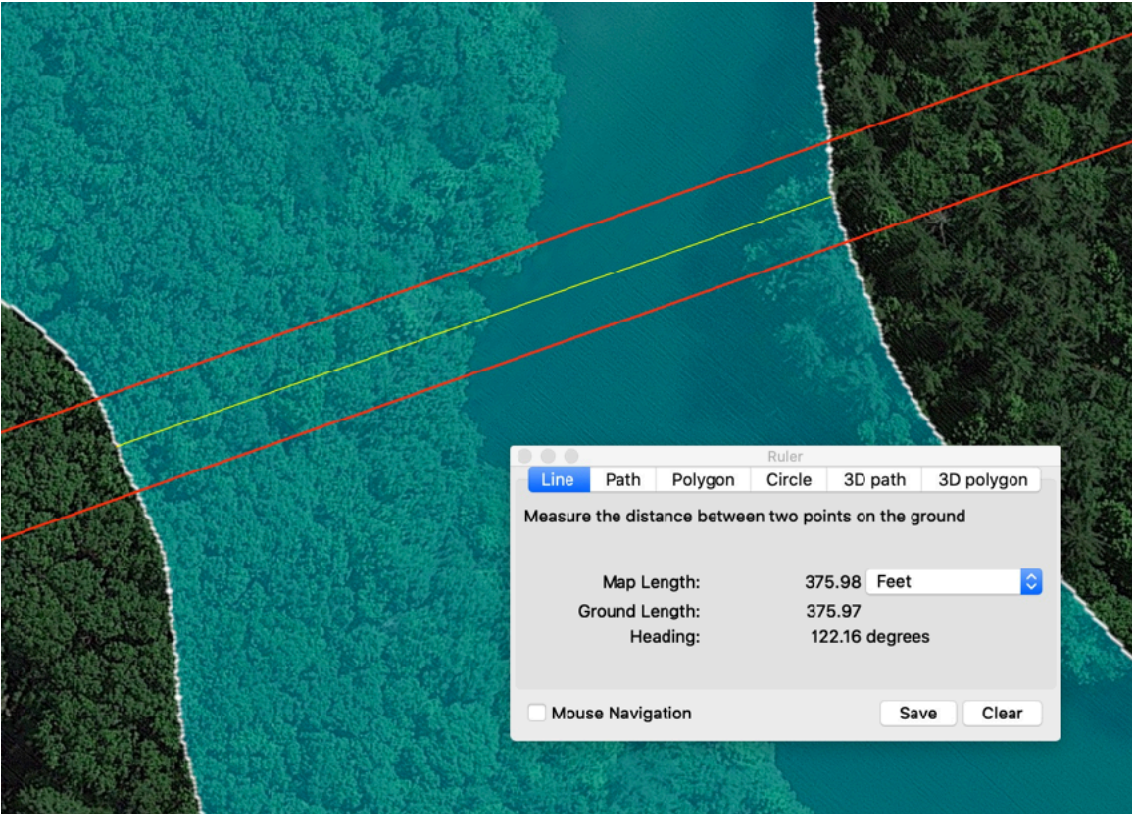


Key

- Pipeline ROW
- Measurement
- Temp. ROW
- Flood Plain

Mile Marker 43.5R3

Linear Feet



Acres of Tress Cut

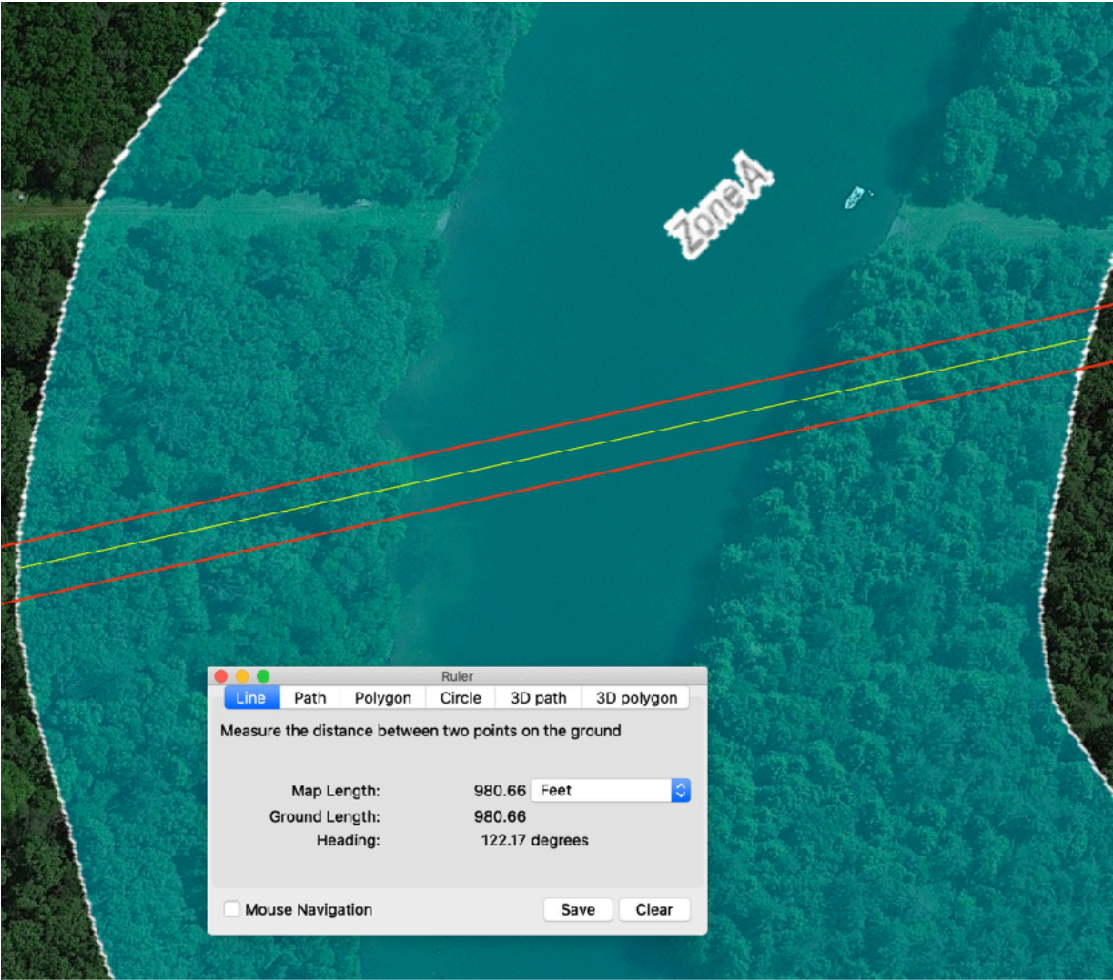
None (HDD Site)

Key

Pipeline ROW	<div></div>
Measurement	<div></div>
Temp. ROW	<div></div>
Flood Plain	<div></div>

Mile Marker 44R3

Linear Feet



Acres of Tress Cut

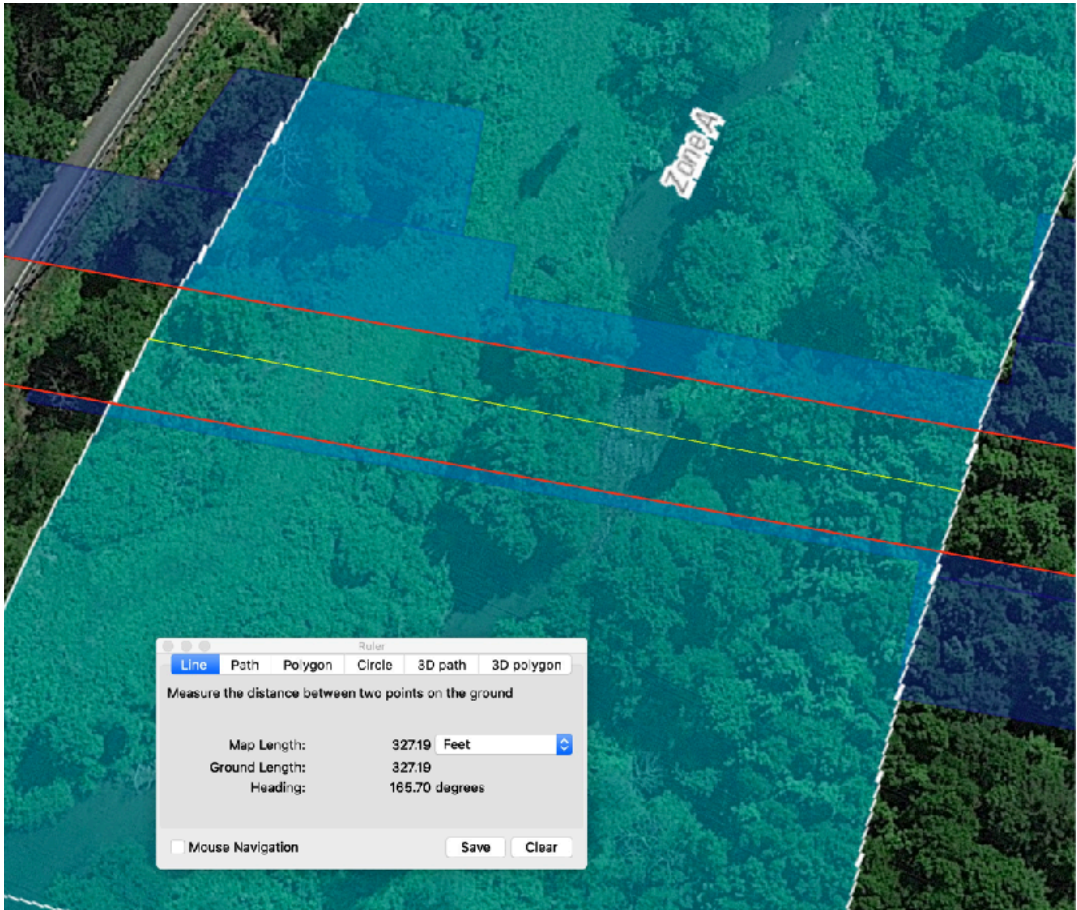
None (HDD Site)

Key

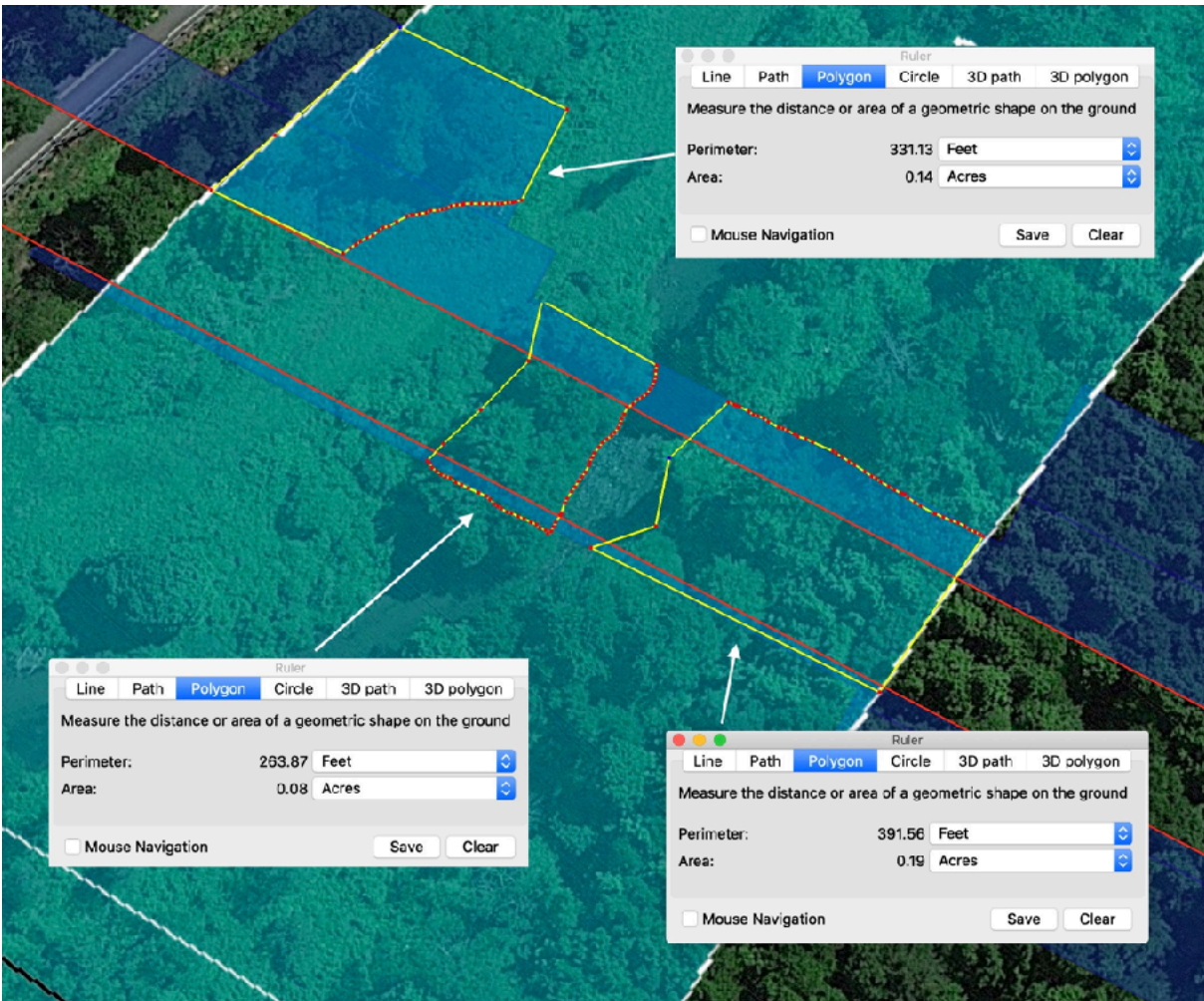
Pipeline ROW	<div></div>
Measurement	<div></div>
Temp. ROW	<div></div>
Flood Plain	<div></div>

Mile Marker 48.1

Linear Feet



Acres of Tress Cut

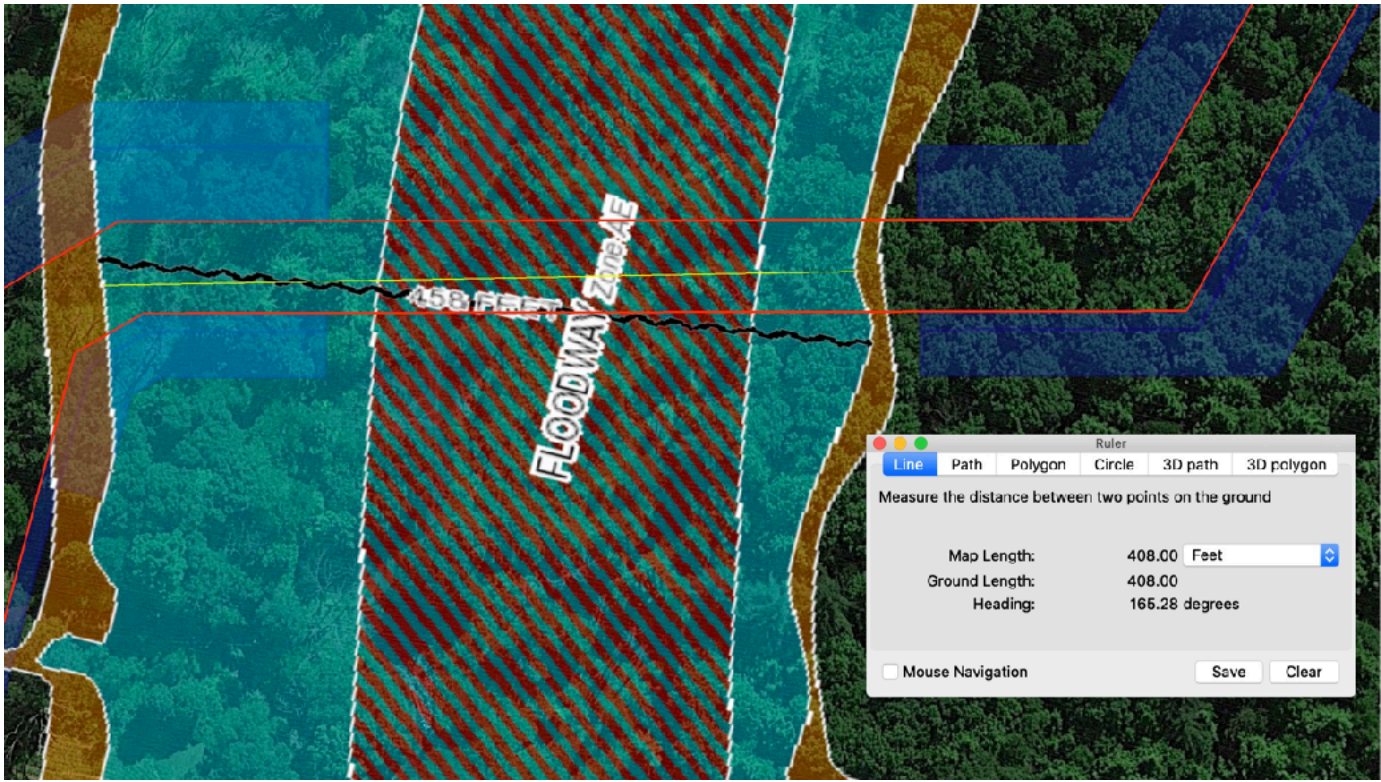


Key

- Pipeline ROW
- Measurement
- Temp. ROW
- Flood Plain

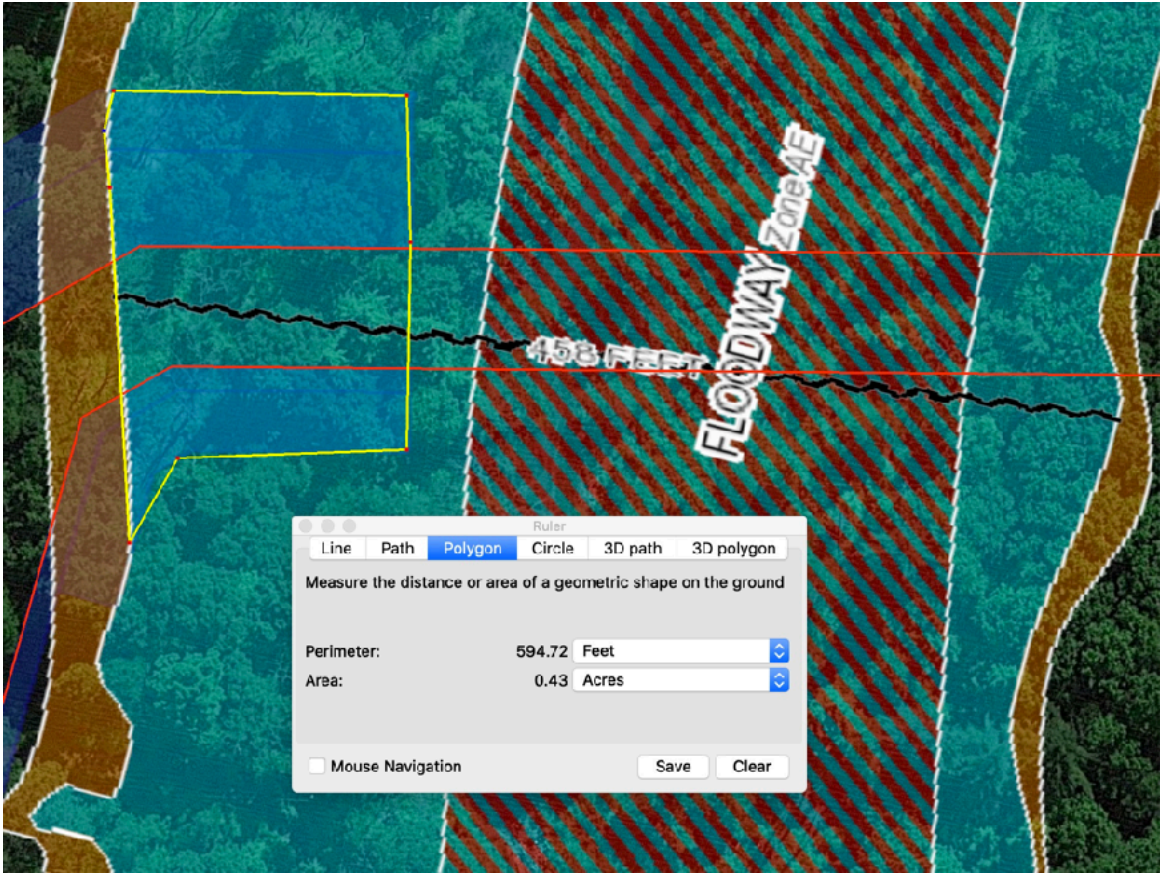
Mile Marker 49.3R3

Linear Feet



Acres of Tress Cut

Note: Bore Site



Key

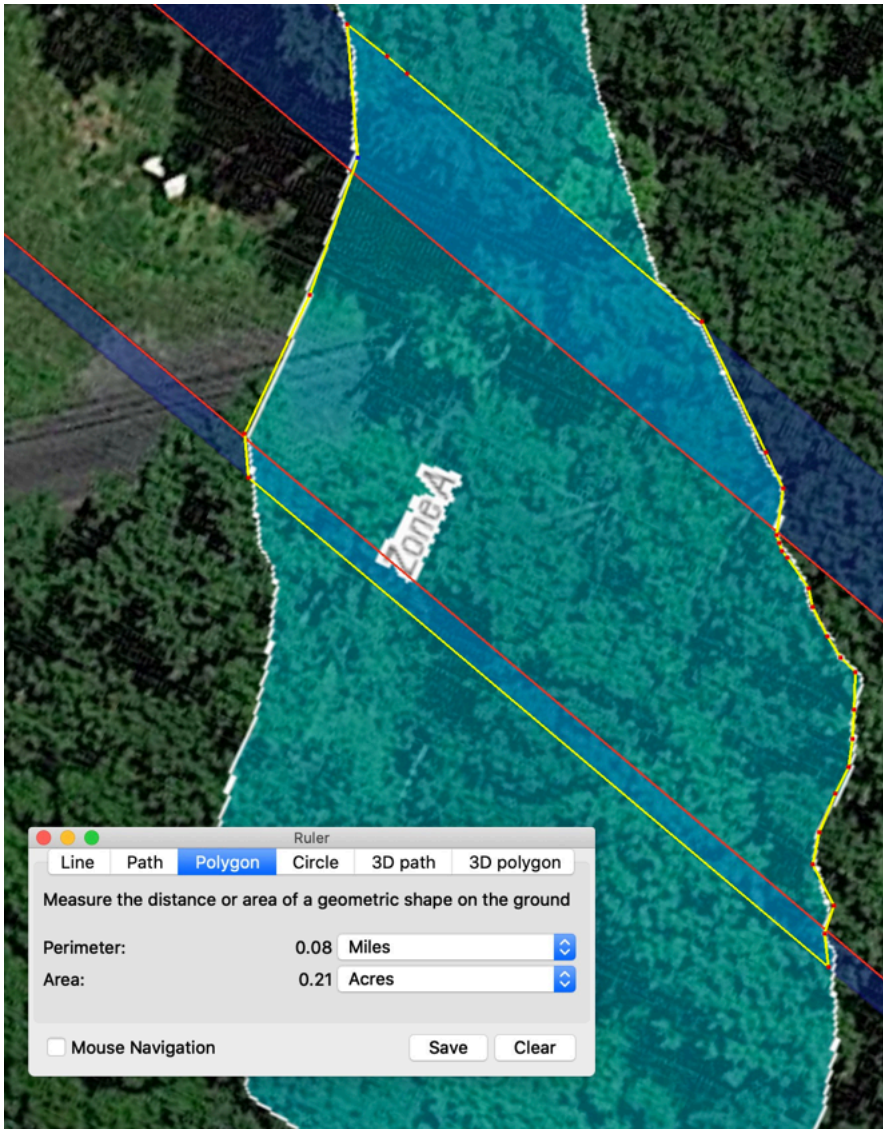
Pipeline ROW	<div></div>
Measurement	<div></div>
Temp. ROW	<div></div>
Flood Plain	<div></div>

Mile Marker 53.3R3

Linear Feet



Acres of Tress Cut

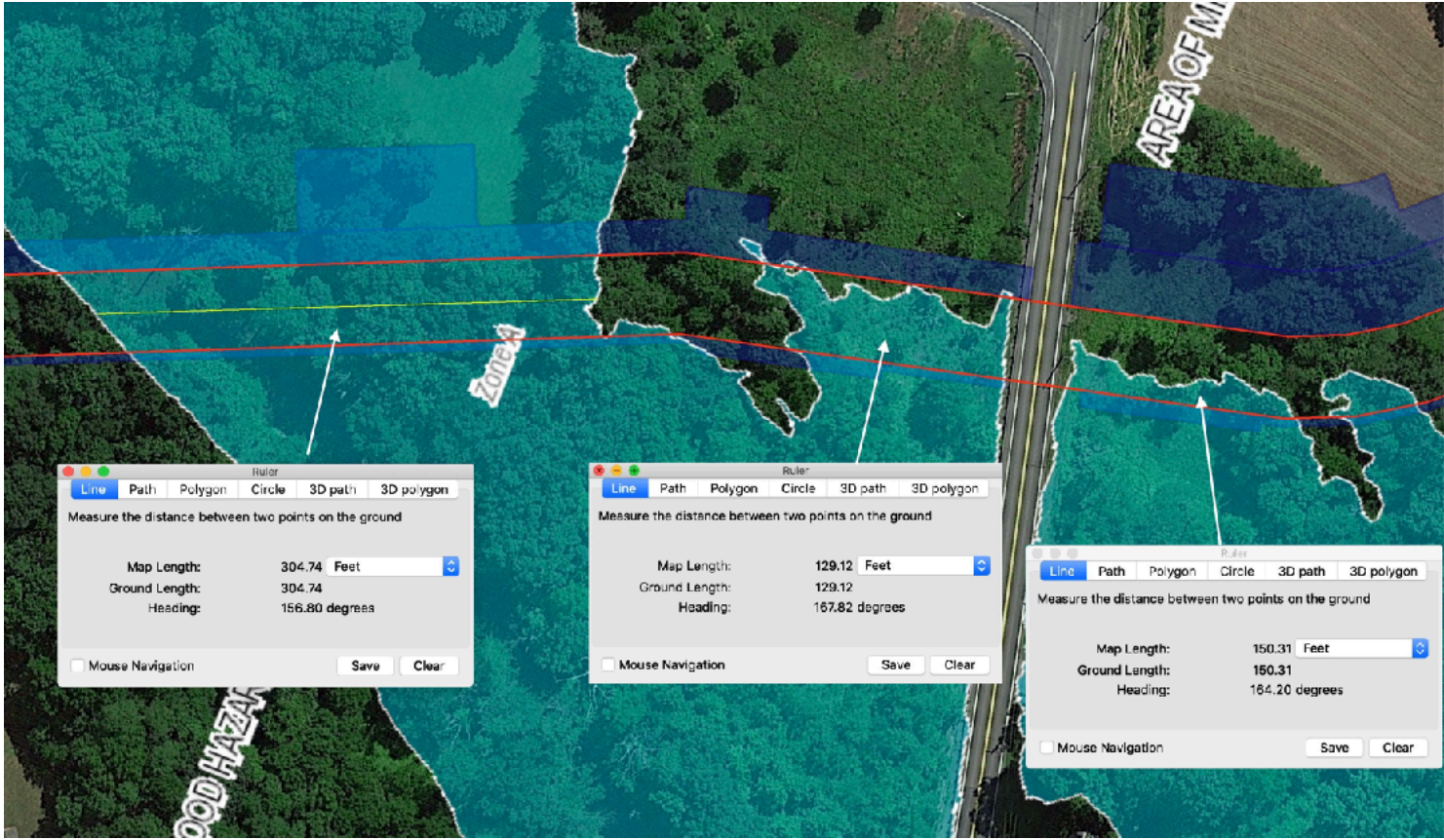


Key

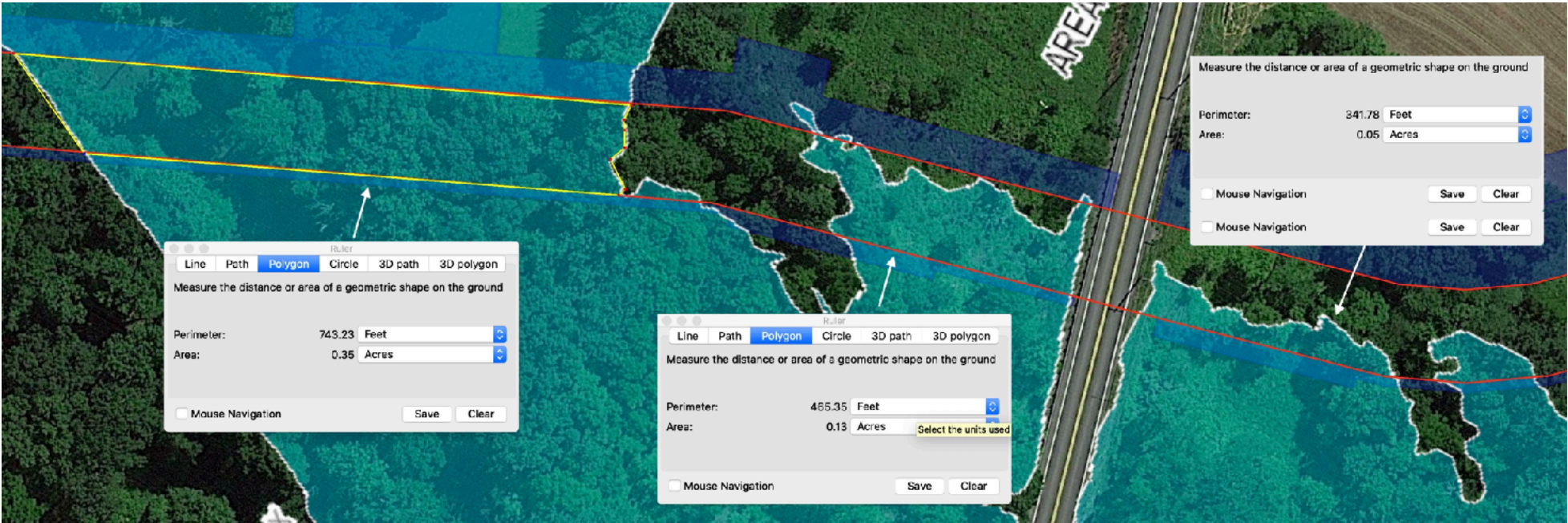
Pipeline ROW	
Measurement	
Temp. ROW	
Flood Plain	

Mile Marker 56

Linear Feet



Acres of Tress Cut

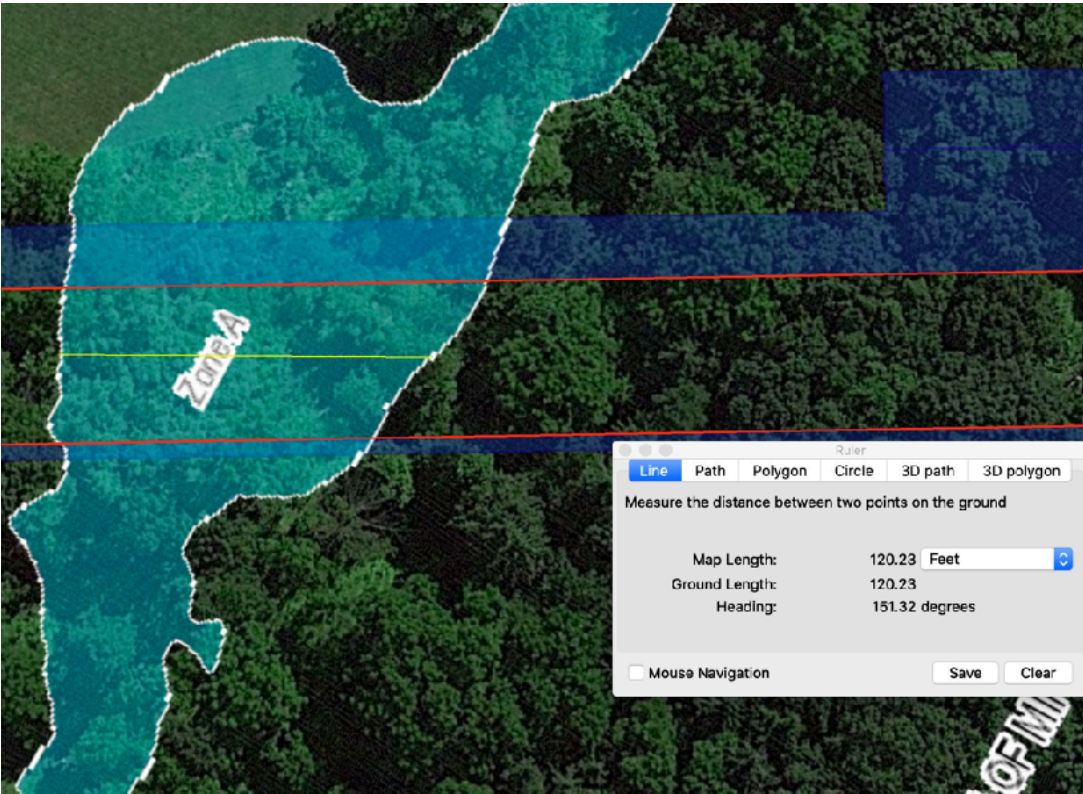


Key

- Pipeline ROW
- Measurement
- Temp. ROW
- Flood Plain

Mile Marker 56.7

Linear Feet



Key

Pipeline ROW

Measurement

Temp. ROW

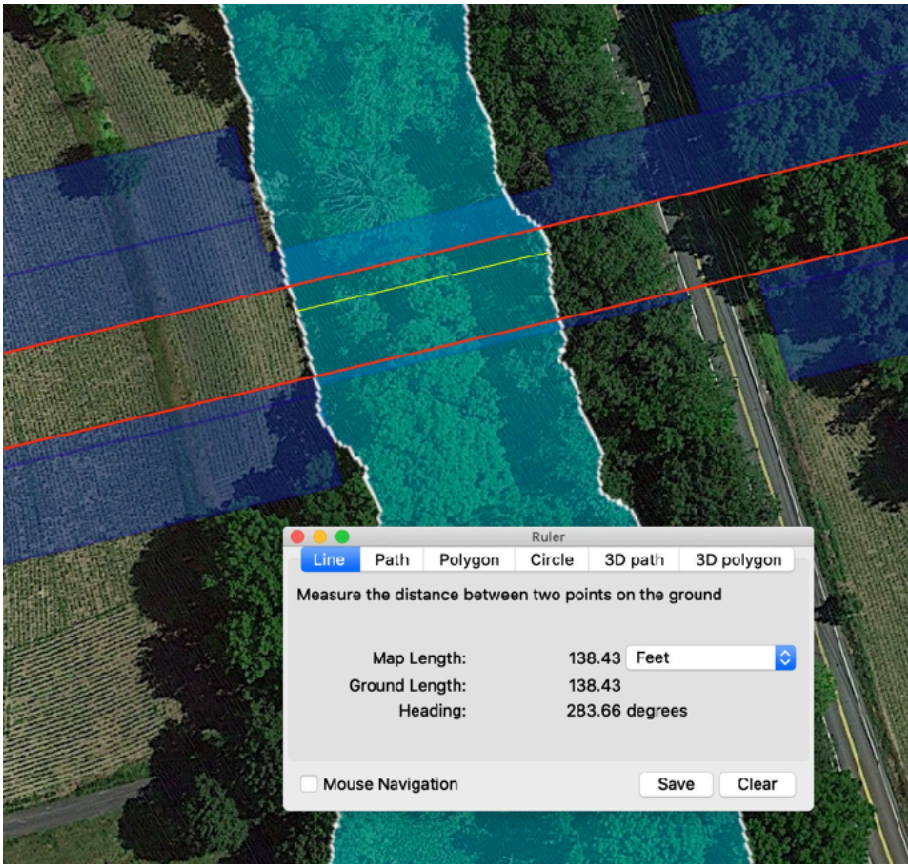
Flood Plain

Acres of Tress Cut

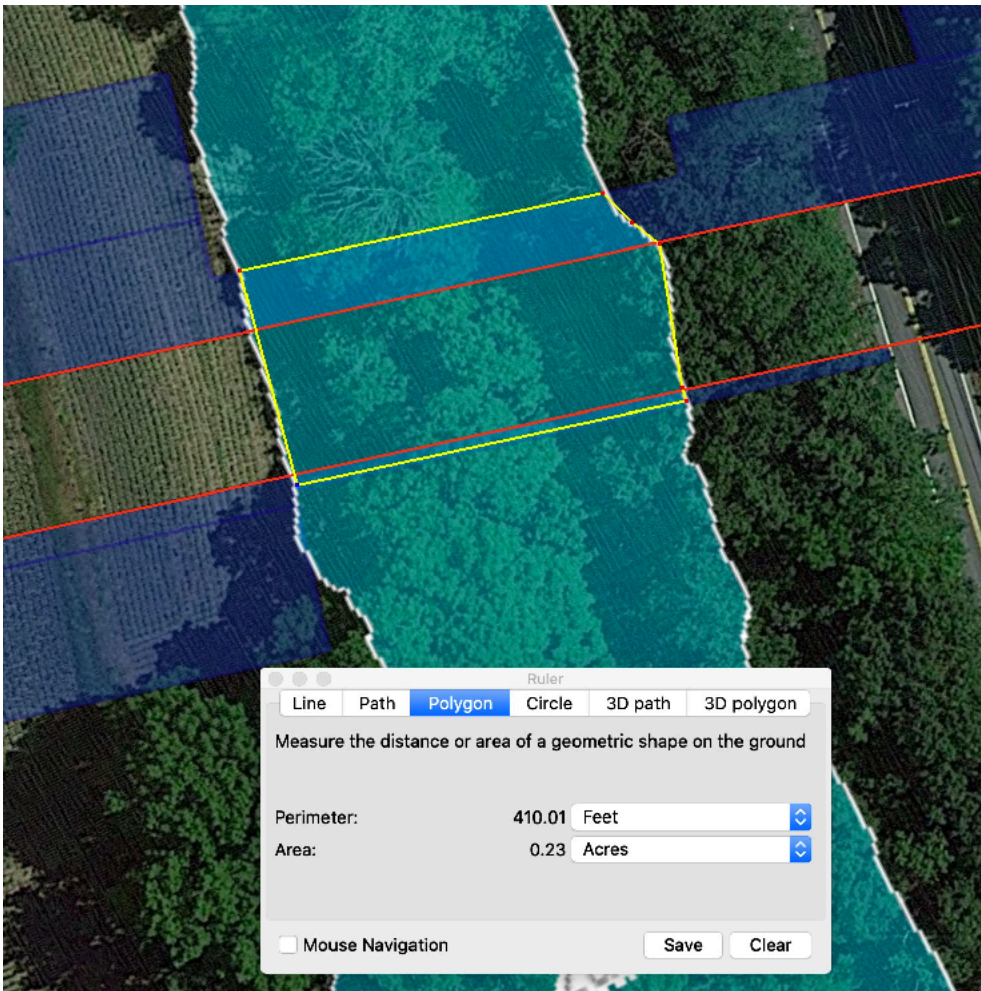


Mile Marker 60.3R2

Linear Feet



Acres of Tress Cut

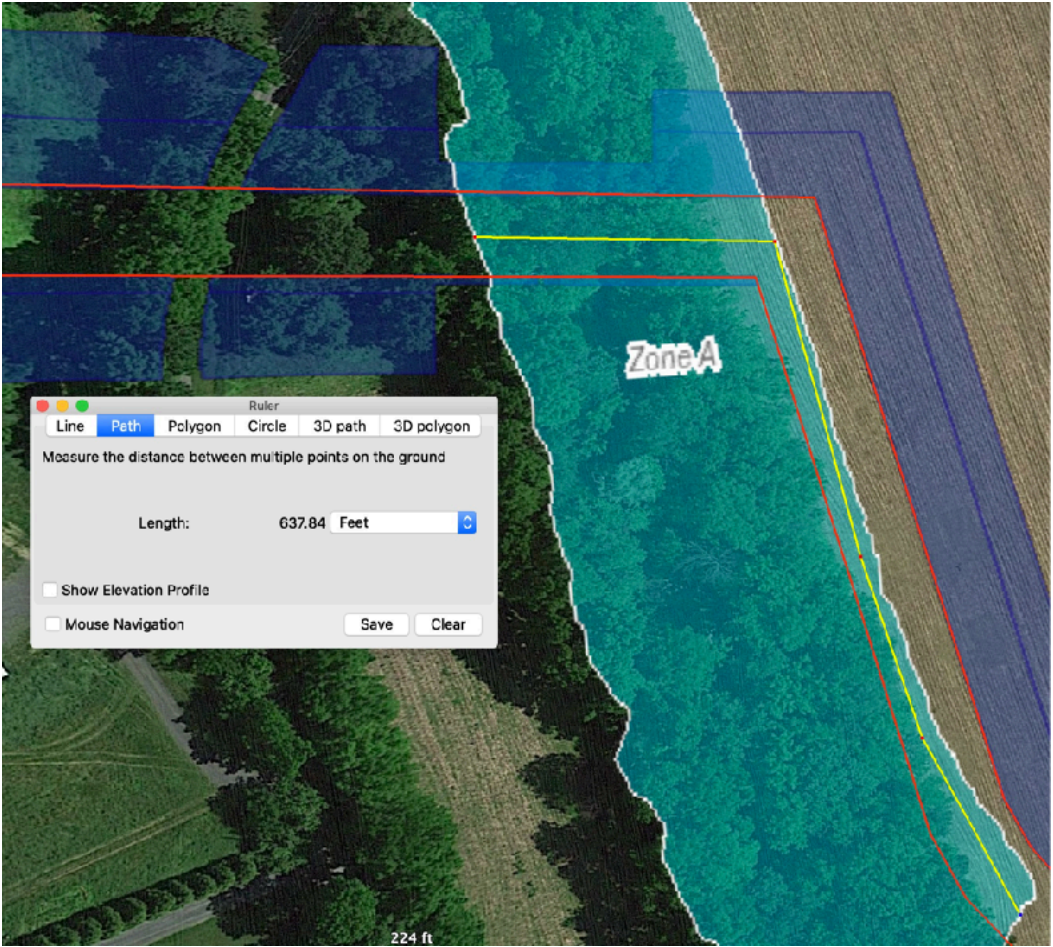


Key

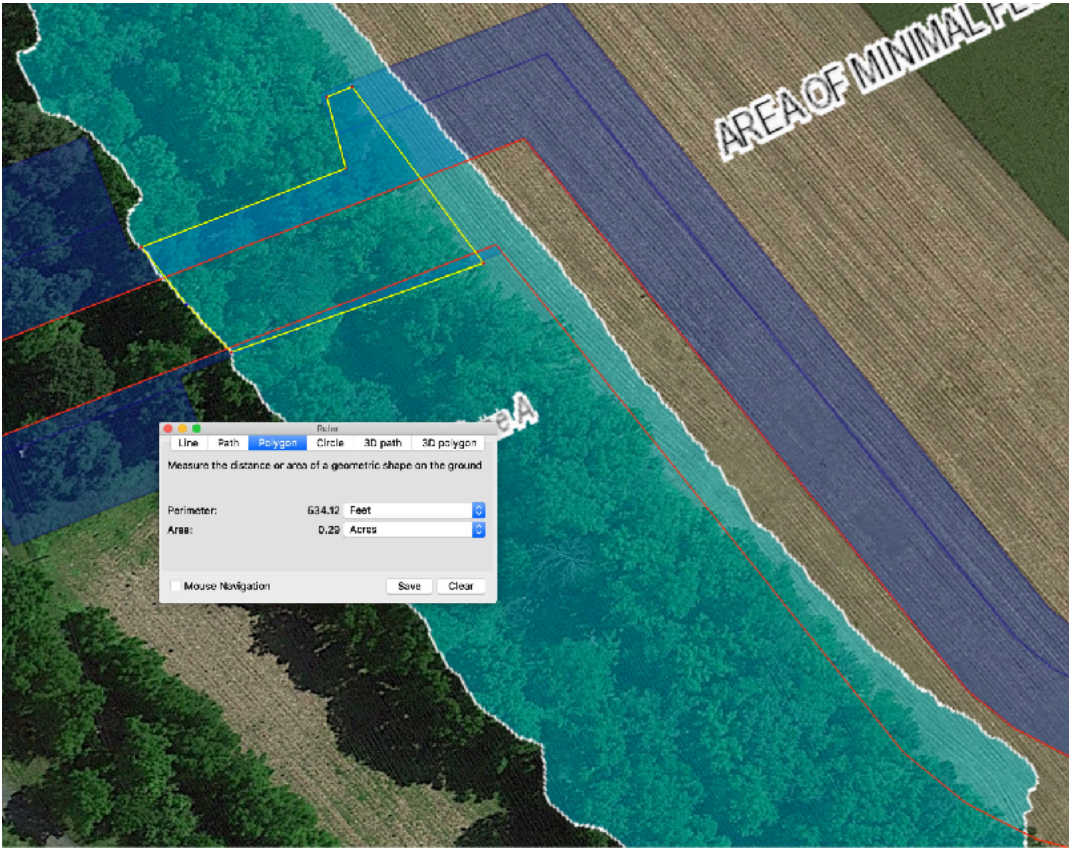
Pipeline ROW	<div></div>
Measurement	<div></div>
Temp. ROW	<div></div>
Flood Plain	<div></div>

Mile Marker 61.5R3

Linear Feet



Acres of Tress Cut

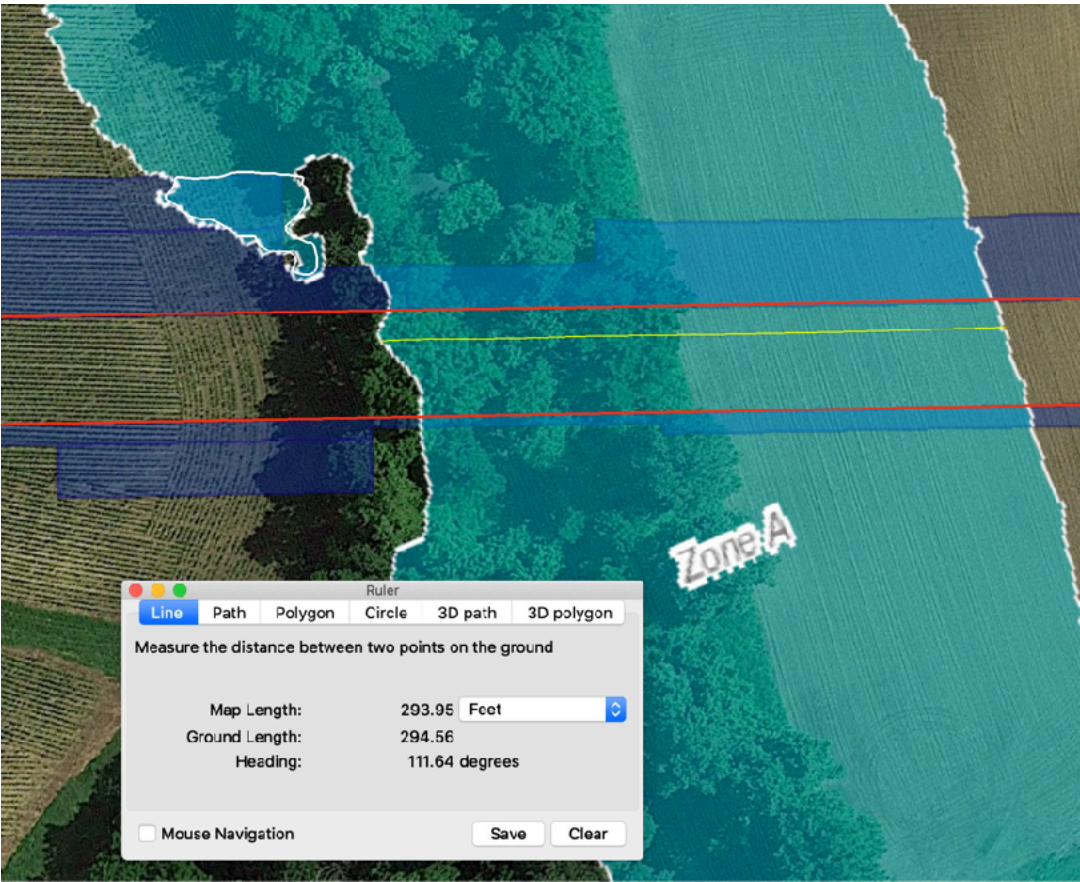


Key

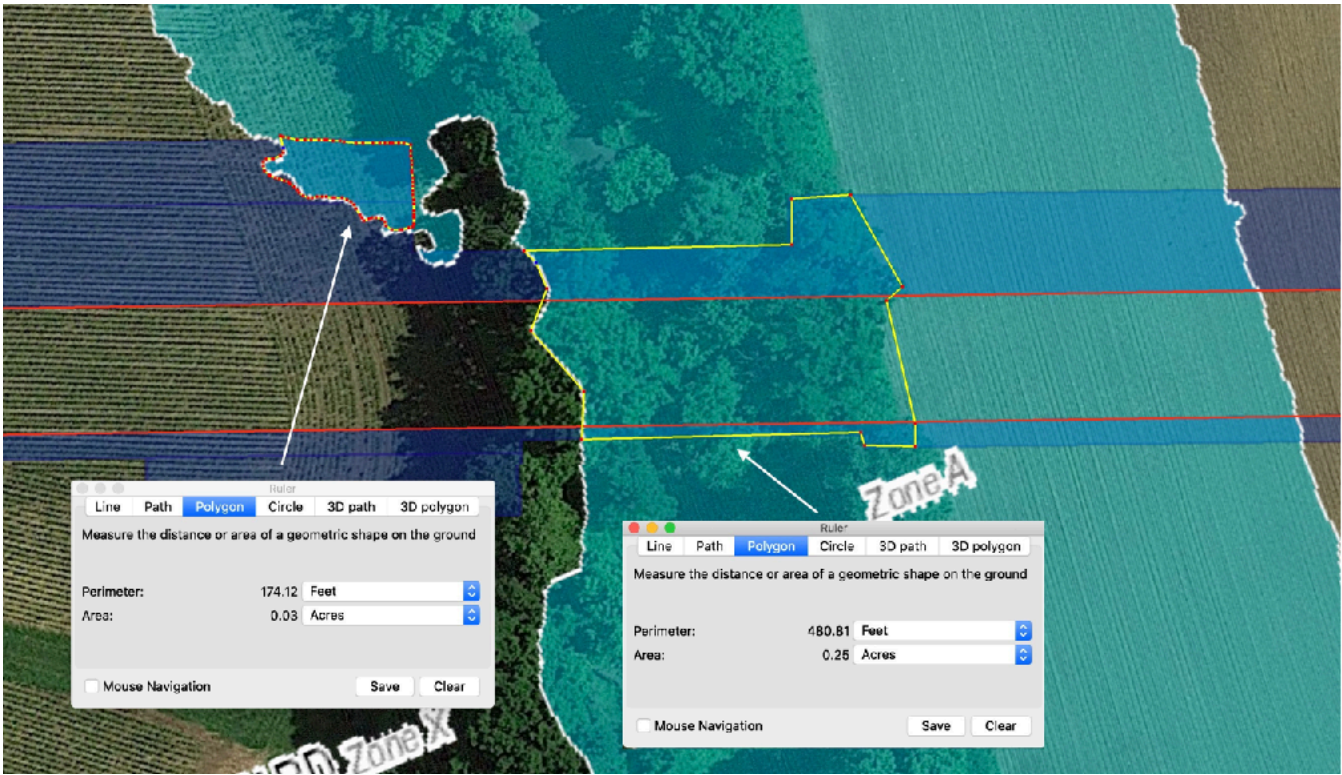
- Pipeline ROW
- Measurement
- Temp. ROW
- Flood Plain

Mile Marker 63.5

Linear Feet



Acres of Tress Cut



Key

Pipeline ROW	<div></div>
Measurement	<div></div>
Temp. ROW	<div></div>
Flood Plain	<div></div>