

Appendix D - Threatened and Endangered Species Consultations

January 23, 2020

USFWS Reference

USFWS Project #2014-1013 (PAFO)
and 05E2NJ00-2014-F-0543 (NJFO)

AECOM Reference

60414094

Pamela Shellenberger
United States Fish & Wildlife Service
Pennsylvania Field Office
110 Radnor Road, Suite 101
State College, PA 16801

PennEast Pipeline Project - Newly proposed aboveground facility

Dear Ms. Shellenberger,

On behalf of PennEast Pipeline Company, LLC (PennEast), AECOM Technical Services, Inc. (AECOM) is providing your office with the enclosed figure and electronic shapefiles (sent via email) showing a newly proposed aboveground facility associated with the PennEast Pipeline Project (Project).

The proposed Church Road Interconnects will be a metering and regulation (M&R) station at the Project's mainline pipeline intersection with Columbia Gas Transmission, LLC (TCO) and Adelphia Gateway, LLC (Adelphia) in Bethlehem Township, Northampton County, Pennsylvania. PennEast proposes to construct the M&R station on property owned by PennEast at milepost (MP) 68.2R3 (refer to enclosed figure). A pig launcher/receiver will be installed along the Project's mainline pipeline in the northern portion of the site to provide access for internal pipeline inspections during Project operations. Station piping, meter runs, flow control valves, heaters, and gas control/remote terminal unit (RTU) buildings will be installed south of the PPL easement in the southwestern portion of the site.

The purpose of the Church Road Interconnects facility is to allow PennEast to construct the Project in two phases. The Phase 1 facilities would include all Project facilities from MP 0.0R1 (northern terminus) to MP 68.2R3 and the Church Road Interconnects; Phase 2 facilities would include all Project facilities from MP 68.2R3 to MP 114.01R3 and the Transco Receiver Site (southern terminus).

The parcels which may be affected are almost entirely within the previously surveyed corridors for the 2016 Certificated Route and the Revised PA Route, for which PennEast has already completed consultations for both with your office; however, small portions of the potential workspace for the newly proposed M&R Station extend beyond the previously surveyed area. These areas are within a residential property owned by PennEast, and do not contain any wetlands, watercourses, or other surface waters. There are several trees on the perimeter of the affected properties, which PennEast plans to leave in place as a screen to limit the visual impacts of the facility.

PennEast has previously consulted with the United States Fish and Wildlife Service (USFWS) regarding federally-listed species within the Project study corridor. Based on those consultations, and because no impacts to wetlands, streams, or forested areas are planned at this site, PennEast does not anticipate any adverse effects to federally listed species as a result of the new facility or the phasing of Project construction.

At this time, on behalf of PennEast, AECOM respectfully asks that the USFWS review the enclosed materials and provide any feedback relating to threatened or endangered species under the jurisdiction of the USFWS. AECOM also respectfully requests the USFWS' confirmation that the construction of the Church Road Interconnects would be compliant with the existing Biological Opinion for this Project, issued on November 28, 2017, and amended July 29, 2019. If you have any questions or require additional information, please feel free to contact me via email or telephone.

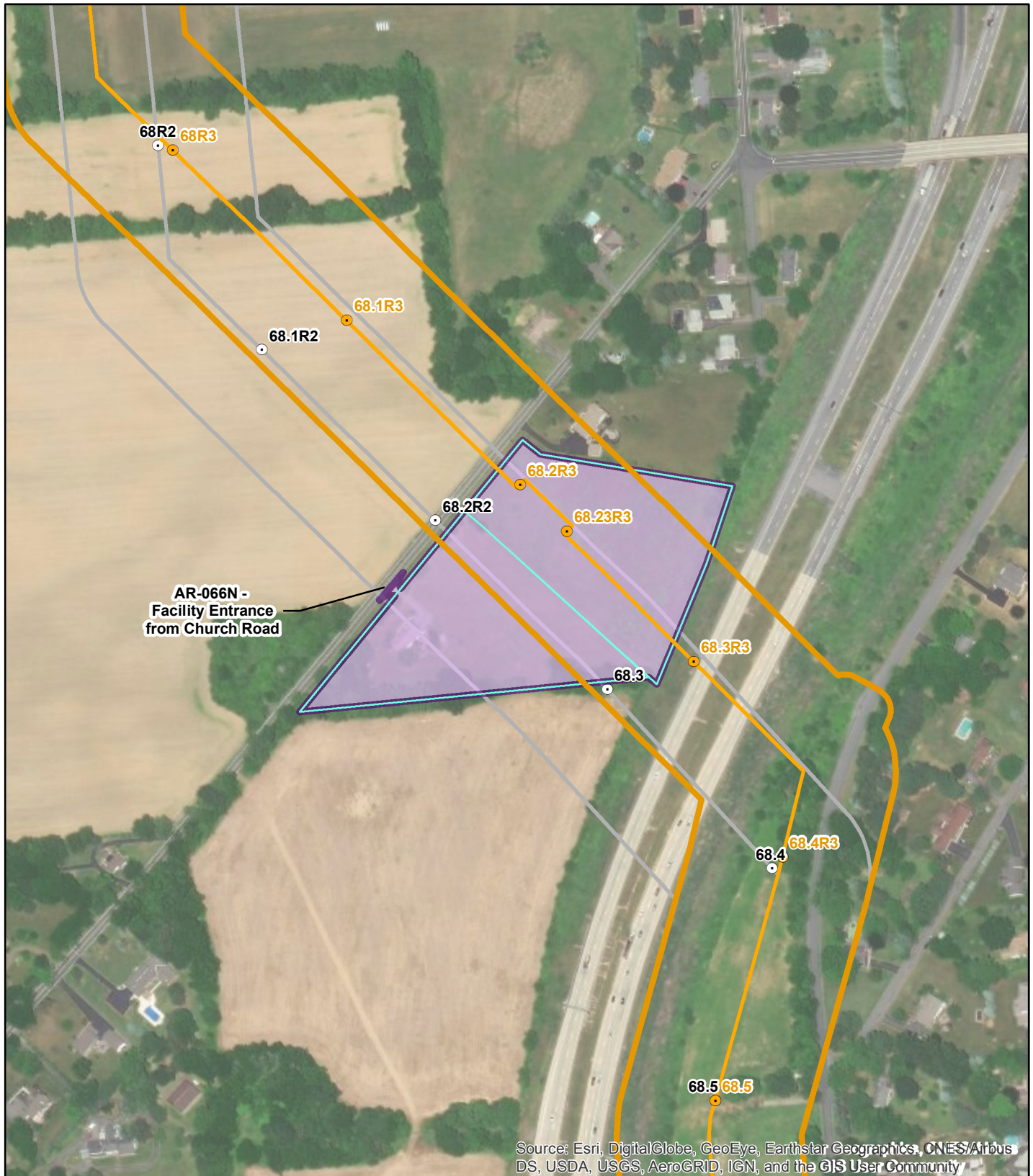
Kind regards,



Brian Cooper
Senior Environmental Scientist
AECOM
T: 610-832-3500
E: brian.cooper@aecom.com

enclosures: Figure (1)
Electronic Shapefile (provided via email)

cc: Amber Holly (PennEast)
Casey Monagan (PennEast)
Sarah Binckley (AECOM)



		Legend <ul style="list-style-type: none"> Revised PA Route Milepost Revised PA Route Centerline Revised PA Route Study Corridor Certificated Route Milepost Certificated Route Centerline Certificated Route Study Corridor Parcels Owned by PennEast Consultation Area 	
TITLE: <h2 style="text-align: center;">PennEast Pipeline Project T&E Consultation Figure</h2>			
LOC:		REV.:	
CKD. BY: BH	ENG.:	Date: 1/9/2020	W.O.:
DRN. BY: NB	SCALE: SEE GRAPHIC SCALE	DWG. NO.:	SHEET:

PennEast Pipeline Company, LLC

January 23, 2020

PFBC Reference
SIR #44756

AECOM Reference
60414094

Gregory Lech
Pennsylvania Fish and Boat
Commission
Natural Gas Section
450 Robinson Lane
Bellefonte, PA 16823

PennEast Pipeline Project - Newly proposed aboveground facility

Dear Mr. Lech,

On behalf of PennEast Pipeline Company, LLC (PennEast), AECOM Technical Services, Inc. (AECOM) is providing your office with the enclosed figure and electronic shapefiles (sent via email) showing a newly proposed aboveground facility associated with the PennEast Pipeline Project (Project).

The proposed Church Road Interconnects will be a metering and regulation (M&R) station at the Project's mainline pipeline intersection with Columbia Gas Transmission, LLC (TCO) and Adelphia Gateway, LLC (Adelphia) in Bethlehem Township, Northampton County, Pennsylvania. PennEast proposes to construct the M&R station on property owned by PennEast at milepost (MP) 68.2R3 (refer to enclosed figure). A pig launcher/receiver will be installed along the Project's mainline pipeline in the northern portion of the site to provide access for internal pipeline inspections during Project operations. Station piping, meter runs, flow control valves, heaters, and gas control/remote terminal unit (RTU) buildings will be installed south of the PPL easement in the southwestern portion of the site.

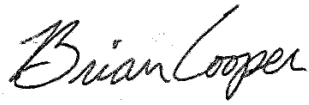
The purpose of the Church Road Interconnects facility is to allow PennEast to construct the Project in two phases. The Phase 1 facilities would include all Project facilities from MP 0.0R1 (northern terminus) to MP 68.2R3 and the Church Road Interconnects; Phase 2 facilities would include all Project facilities from MP 68.2R3 to MP 114.01R3 and the Transco Receiver Site (southern terminus).

The parcels which may be affected are almost entirely within the previously surveyed corridors for the 2016 Certificated Route and the Revised PA Route, for which PennEast has already completed consultations for both with your office; however, small portions of the potential workspace for the newly proposed M&R Station extend beyond the previously surveyed area. These areas are within a residential property owned by PennEast, and do not contain any wetlands, watercourses, or other surface waters. There are several trees on the perimeter of the affected properties, which PennEast plans to leave in place as a screen to limit the visual impacts of the facility.

PennEast has previously consulted with the Pennsylvania Fish and Boat Commission (PFBC) regarding state-listed species within the Project study corridor. Based on these consultations, and because no impacts to streams, wetlands, or other surface waters are planned at or near this site, PennEast does not anticipate any adverse effects to state-listed species as a result of the new facility or the phasing of Project construction.

At this time, on behalf of PennEast, AECOM respectfully asks that the PFBC review the enclosed materials and provide any relating to threatened or endangered species under the jurisdiction of the PFBC. If you have any questions or require additional information, please feel free to contact me via email or telephone.

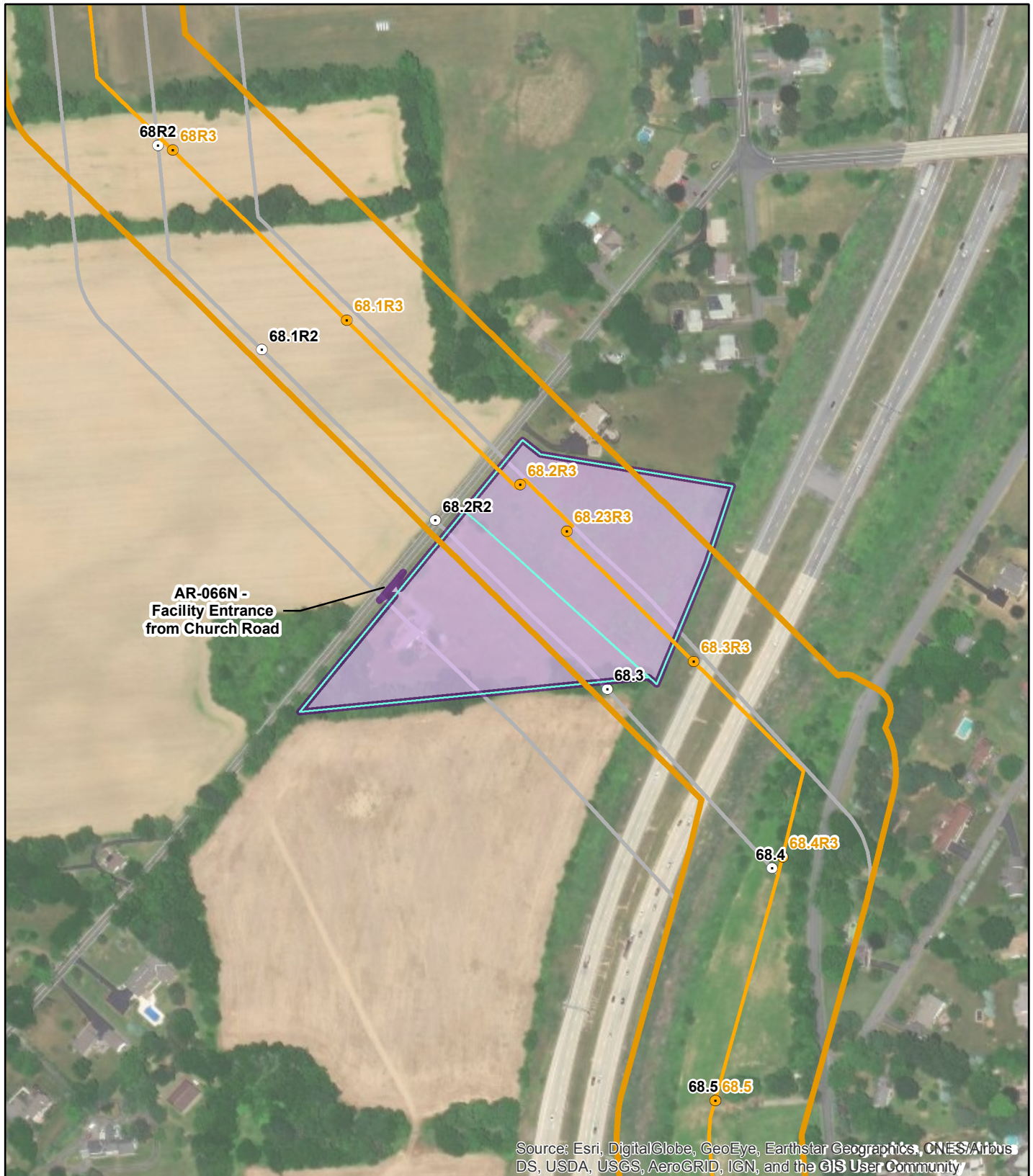
Kind regards,

A handwritten signature in black ink that reads "Brian Cooper". The signature is fluid and cursive, with the first name "Brian" and last name "Cooper" clearly distinguishable.

Brian Cooper
Senior Environmental Scientist
AECOM
T: 610-832-3500
E: brian.cooper@aecom.com

enclosures: Figure (1)
Electronic shapefile (via email)

cc: Amber Holly (PennEast)
Casey Monagan (PennEast)
Sarah Binckley (AECOM)



		Legend <ul style="list-style-type: none"> Revised PA Route Milepost Revised PA Route Centerline Revised PA Route Study Corridor Certificated Route Milepost Certificated Route Centerline Certificated Route Study Corridor Parcels Owned by PennEast Consultation Area 	
TITLE: <p align="center">PennEast Pipeline Project T&E Consultation Figure</p>			
LOC:		REV.:	
CKD. BY: BH	ENG.:	Date: 1/9/2020	W.O.:
DRN. BY: NB	SCALE: SEE GRAPHIC SCALE	DWG. NO.:	SHEET:

PennEast Pipeline Company, LLC

January 23, 2020

PADCNR Reference
PNDI Large Project #022426

AECOM Reference
60414094

Jason Ryndock
Ecological Information Specialist
Pennsylvania Department of
Conservation and Natural
Resources
400 Market Street, P.O. Box 8552
Harrisburg, PA 17105

PennEast Pipeline Project - Newly proposed aboveground facility

Dear Mr. Ryndock,

On behalf of PennEast Pipeline Company, LLC (PennEast), AECOM Technical Services, Inc. (AECOM) is providing your office with the enclosed figure and electronic shapefiles (sent via email) showing a newly proposed aboveground facility associated with the PennEast Pipeline Project (Project).

The proposed Church Road Interconnects will be a metering and regulation (M&R) station at the Project's mainline pipeline intersection with Columbia Gas Transmission, LLC (TCO) and Adelphia Gateway, LLC (Adelphia) in Bethlehem Township, Northampton County, Pennsylvania. PennEast proposes to construct the M&R station on property owned by PennEast at milepost (MP) 68.2R3 (refer to enclosed figure). A pig launcher/receiver will be installed along the Project's mainline pipeline in the northern portion of the site to provide access for internal pipeline inspections during Project operations. Station piping, meter runs, flow control valves, heaters, and gas control/remote terminal unit (RTU) buildings will be installed south of the PPL easement in the southwestern portion of the site.

The purpose of the Church Road Interconnects facility is to allow PennEast to construct the Project in two phases. The Phase 1 facilities would include all Project facilities from MP 0.0R1 (northern terminus) to MP 68.2R3 and the Church Road Interconnects; Phase 2 facilities would include all Project facilities from MP 68.2R3 to MP 114.01R3 and the Transco Receiver Site (southern terminus).

The parcels which may be affected are almost entirely within the previously surveyed corridors for the 2016 Certificated Route and the Revised PA Route, for which PennEast has already completed consultations for both with your office; however, small portions of the potential workspace for the newly proposed M&R Station extend beyond the previously surveyed area. These areas are within a residential property owned by PennEast, and do not contain any wetlands, watercourses, or other surface waters. There are several trees on the perimeter of the affected properties, which PennEast plans to leave in place as a screen to limit the visual impacts of the facility.

PennEast has previously consulted with the Pennsylvania Department of Conservation and Natural Resources (PADCNR) regarding state-listed plant species within the Project study corridor. Based on those consultations, PennEast does not anticipate any adverse effects to state-listed plant species as a result of the new facility or the phasing of Project construction.

At this time, on behalf of PennEast, AECOM respectfully asks the PADCNR review the enclosed materials and provide any feedback relating to threatened or endangered species under the jurisdiction of the PADCNR. If you have any questions or require additional information, please feel free to contact me via email or telephone.

Kind regards,



Brian Cooper
Senior Environmental Scientist
AECOM
T: 610-832-3500
E: brian.cooper@aecom.com

enclosures: Figure (1)
Electronic shapefile (via email)

cc: Amber Holly, PennEast
Casey Monagan, PennEsat
Sarah Binckley, AECOM



		Legend <ul style="list-style-type: none"> Revised PA Route Milepost Revised PA Route Centerline Revised PA Route Study Corridor Certificated Route Milepost Certificated Route Centerline Certificated Route Study Corridor Parcels Owned by PennEast Consultation Area 	
TITLE: <p align="center">PennEast Pipeline Project T&E Consultation Figure</p>			
LOC:		REV.:	
CKD. BY: BH	ENG.:	Date: 1/9/2020	W.O.:
DRN. BY: NB	SCALE: SEE GRAPHIC SCALE	DWG. NO.:	SHEET:

PennEast Pipeline Company, LLC

January 23, 2020

PGC Reference
PGC ID #20140819001 Revision

AECOM Reference
60414094

Tracey Librandi Mumma
Pennsylvania Game Commission
2001 Elmerton Avenue
Harrisburg, PA 17110

PennEast Pipeline Project - Newly proposed aboveground facility

Dear Ms. Librandi Mumma,

On behalf of PennEast Pipeline Company, LLC (PennEast), AECOM Technical Services, Inc. (AECOM) is providing your office with the enclosed figure and electronic shapefiles (sent via email) showing a newly proposed aboveground facility associated with the PennEast Pipeline Project (Project).

The proposed Church Road Interconnects will be a metering and regulation (M&R) station at the Project's mainline pipeline intersection with Columbia Gas Transmission, LLC (TCO) and Adelphia Gateway, LLC (Adelphia) in Bethlehem Township, Northampton County, Pennsylvania. PennEast proposes to construct the M&R station on property owned by PennEast at milepost (MP) 68.2R3 (refer to enclosed figure). A pig launcher/receiver will be installed along the Project's mainline pipeline in the northern portion of the site to provide access for internal pipeline inspections during Project operations. Station piping, meter runs, flow control valves, heaters, and gas control/remote terminal unit (RTU) buildings will be installed south of the PPL easement in the southwestern portion of the site.


The purpose of the Church Road Interconnects facility is to allow PennEast to construct the Project in two phases. The Phase 1 facilities would include all Project facilities from MP 0.0R1 (northern terminus) to MP 68.2R3 and the Church Road Interconnects; Phase 2 facilities would include all Project facilities from MP 68.2R3 to MP 114.01R3 and the Transco Receiver Site (southern terminus).

The parcels which may be affected are almost entirely within the previously surveyed corridors for the 2016 Certificated Route and the Revised PA Route, for which PennEast has already completed consultations for both with your office; however, small portions of the potential workspace for the newly proposed M&R Station extend beyond the previously surveyed area. These areas are within a residential property owned by PennEast, and do not contain any wetlands, watercourses, or other surface waters. There are several trees on the perimeter of the affected properties, which PennEast plans to leave in place as a screen to limit the visual impacts of the facility.

PennEast has previously consulted with the Pennsylvania Game Commission (PGC) regarding state-listed wildlife species within the Project study corridor. Based on those consultations, and because no impacts to wetlands, streams, or forested areas are planned at this site, PennEast does not anticipate any adverse effects to any state-listed species as a result of the new facility or the phasing of Project construction.

At this time, on behalf of PennEast, AECOM respectfully asks that the PGC review the enclosed materials and provide relating to threatened or endangered species under the jurisdiction of the PGC. If you have any questions or require additional information, please feel free to contact me via email or telephone.

Kind regards,



Brian Cooper
Senior Environmental Scientist
AECOM
T: 610-832-3500
E: brian.cooper@aecom.com

enclosures: Figure (1)
Electronic shapefile (via email)

cc: Amber Holly (PennEast)
Casey Monagan (PennEast)
Sarah Binckley (AECOM)



		Legend <ul style="list-style-type: none"> Revised PA Route Milepost Revised PA Route Centerline Revised PA Route Study Corridor Certificated Route Milepost Certificated Route Centerline Certificated Route Study Corridor Parcels Owned by PennEast Consultation Area 	
TITLE: <p align="center">PennEast Pipeline Project T&E Consultation Figure</p>			
LOC:		REV.:	
CKD. BY: BH	ENG.:	Date: 1/9/2020	W.O.:
DRN. BY: NB	SCALE: SEE GRAPHIC SCALE	DWG. NO.:	SHEET:

PennEast Pipeline Company, LLC